



model 16000

features

- 400 t (440 USt)
- 2 599 mton-m (18,800 ft-kips) Maximum Load Moment
- 96 m (315') Heavy-Lift Boom
- 132 m (432') Luffing Jib on Heavy-Lift Boom
- 372 kW (500 HP) engine
- EPIC controls with CANbus technology
- 212 m/m (697 fpm) line speed standard
- 155 kN (35,000 lb.) line pull standard
- Designed to meet US weight and European width requirements
- Manitowoc Crane CARE comprehensive support



contents

| | |
|--|----|
| Specifications | 3 |
| Outline Dimensions | 6 |
| Transport Data | 9 |
| Crane Self Assembly | 10 |
| Boom Combinations | 14 |
| Heavy Lift Range Diagram and Load Charts | 16 |
| Upper Boom Point Range Diagram and Load Charts | 18 |
| Luffing Jib Range Diagram and Load Charts | 20 |



Upperworks



Engine

Cummins Model QSX15 – C500 diesel, 6 cylinder, 372 kW (500 BHP) at 1800 governed RPM.

Includes pump drive disconnect for easier starting, engine block heater (120V), ether starting aid, high silencing muffler, hydraulic oil cooler, radiator and fan.

Multiple hydraulic pump drive transmission provides power for all machine functions.

Two 12 volt maintenance-free batteries, 1155 CCA at -18°C (0° F), 24 volt system and 100 amp alternator.

One diesel fuel tank, 946 L. (250 gal.), with level indicator in operator's cab.

Optional: Cold-weather package with heater for fluids, and computer display.



Controls

Modulating electronic-over-hydraulic controls provide infinite speed response directly proportional to control lever movement. Controls include Manitowoc's exclusive **EPIC**® Electronically Processed Independent Control system with **CAN-BUS** technology providing microprocessor driven control logic, pump control, on-board diagnostics, and service information.

Block-up limit control is standard for hoist and whip lines.

Integrated Rated Capacity Limiter system (RCL) is standard for main boom and upper boom point. "Function cut-out" or "warning only" operation is selected via a keyed switch on the RCL console.

Travel and swing alarms are standard.

- Optional: Anemometer (wind speed indicator). Booms and jibs are prewired for anemometer.



Hydraulic System

Six high-pressure piston pumps, driven by a multi-pump transmission, provide independent closed-loop hydraulic power for the hoisting drums, boom hoist,

swing, left crawler and right crawler.

Hydraulic reservoir capacity is 719 L. (190 gal.) and is equipped with breather, clean out access, and internal diffuser.

Each function is equipped with relief valves to protect the hydraulic circuit from overload or shock.

System includes oil cooler and replaceable, full flow filter. All oil is filtered before entering the hydraulic pumps.

Hydraulic system also includes pump transmission disconnect and hydraulic oil cooler.



Drums

Basic machine is equipped with 108,6 cm (42-3/4") wide and 64,1 cm (25-1/4") diameter main hoist drum, mounted in the boom butt, and 82,2 cm (32-3/8") wide and 64,1 cm (25-1/4") diameter whip drum, mounted in the rotating bed. Each end of the main drum is driven by a variable-displacement hydraulic motor through a planetary reduction. The whip drum is driven by an independent variable-displacement hydraulic motor thru a planetary reduction mounted on a shaft with anti-friction bearings. Drums are grooved for 28 mm rope.

Powered hoisting/lowering operation is standard with automatic (spring applied, hydraulically released) multi-disc brakes, and drum rotation indicators.

- Optional: High speed whip drum, each end of the whip drum is driven by a variable-displacement hydraulic motor through a planetary reduction.
- Optional: Auxiliary (third) hydraulic powered drum rated 147 kN (33,000 lb) line pull mounted in boom butt. Includes third drum control system.
- Optional: Auxiliary drum preparation includes electric wiring, controls, hydraulic pump and plumbing.



Swing System

Bearing adapter-mounted independent swing is powered by a fixed-displacement hydraulic motor coupled to an internal brake and planetary reduction. Includes Manitowoc Patented gear-segment type swing lock.

Swing system maximum speed: 2.2 rpm.

specifications

4 Moving Mast Hoist System

Independent moving mast hoist with two grooved drums, each 32,5 cm (12-13/16") wide and 64,1 cm (25-1/4") diameter drum grooved for 1-1/8" diameter wire rope. Includes 498 m (1,620') of 1-1/8" wire rope for 26-part line reeving.

Drum is powered by 2 variable-displacement hydraulic motors coupled to integral brake and planetary reduction gearboxes. Ratcheting pawl and rotation indicator are standard.

Moving Mast Hoist Speed

Raise 96 m (315') full main boom from 0° - 82° in 3 minutes, 48 seconds.

Boom Support System

Moving Mast

Moving Mast is 9,75 m (32') long and connects the boom hoist reeving to the steel boom suspension strap rigging. When used with the optional self-erect package, the mast is used for crane assembly and disassembly. It is capable of lifting and positioning the crawler assemblies, stacking the counterweights, and assembling the boom and jib.

Spring cushioned boom stop and automatic boom stop are standard.

Counterweight

Counterweight tray and counterweights for the upperworks attaches to the rotating bed with power actuated pins.

| QYT. | ITEM | UNIT WEIGHT | | TOTAL WEIGHT | |
|-----------------------|------------------------------|----------------|----------------|--------------|---------|
| | | kg | lb | kg | lb |
| 10 | Upperworks Upper Side Box | 8 164 | 18,000 | 81 640 | 180,000 |
| 1 | Counterweight Tray | 19 958 | 44,000 | 19 958 | 44,000 |
| Series 1 Total | | 101 598 | 224,000 | | |
| 4 | Upperworks Upper Side Box | 8 164 | 18,000 | 32 656 | 72,000 |
| 2 | Carbody Center Box | 13 608 | 30,000 | 27 216 | 60,000 |
| Series 2 Total | | 161 470 | 356,000 | | |
| 2 | Upperworks Upper Side Box | 8 164 | 18,000 | 16 328 | 36,000 |
| 4 | Carbody Side Box | 6 804 | 15,000 | 27 216 | 60,000 |
| Series 3 Total | | 205 014 | 452,000 | | |

Vision Operator's Cab

The Vision Cab™ is a fully enclosed and insulated steel module mounted to the left front corner of rotating bed. Module is equipped with power tilt, sliding door, large safety glass window and roof windshield wipers, dome light, sun visor and shade, fire extinguisher, air conditioning, swing and travel alarms, and radio/CD player are standard equipment. Operator's station swings over front of rotating bed for transportation.

Optional: Nylon protective window covers.

Lowerworks

Carbody

Connects rotating bed to crawler assemblies. High strength fabricated steel assembly with FACT connection system for fast installation and removal of crawler assemblies.

Crawlers

Crawler assemblies are 10,4 m (34' 2") long with 1,5 m (60") wide cast steel crawler pads and automatically lubricated intermediate rollers. Each crawler is identical and can be mounted on either side of the carbody. Each crawler is powered independently by a variable displacement hydraulic motor and includes two hydraulically powered pin actuators for fast installation and removal from carbody. Carbody mounted drive motors are connected to crawler final reduction via drive shaft with guard. Crawlers provide ample tractive effort for counter rotation with full rated load.

Maximum ground speed of 1,24 kph (0.77 mph).

Attachments

No. 58 Heavy-Lift Boom

The liftcrane is equipped with 30 m (98') No. 58 basic boom consisting of 8 m (26' 3") butt, 12 m (39' 5") insert with luffing hoist sheaves, 5 m (16' 5") transition insert, and 5 m (16' 5") top with thirteen 76,2 cm (30") diameter tapered roller bearing sheaves. Includes rope guides, boom hoist wire rope, boom angle indicator and 771 kg (1,700 lb) hook and weight ball. The boom connectors utilize Manitowoc's patented exclusive FACT™ connection system boom

connector. Spring cushioned boom stop. Automatic boom stop.
Powered boom hinge system including cylinder, piping, operating controls, and locking device standard.

Luffing jib preparation included as standard.

- Optional: 6 m (19' 8") and 12 m (39' 5") No. 58 boom inserts with steel boom suspension straps and FACT connection system.

Utilize main boom inserts in combination with No. 58 basic main boom for total length up to 96 m (315').

- Optional: No. 58 detachable upper boom point with one 76,2 cm (30") diameter tapered roller bearing steel sheave grooved for 28 mm rope with rope guard for liftcrane.
- Optional: Heavy-duty 97,6 t (107.6 USt) detachable upper boom point with three 76,2 cm (30") diameter tapered roller bearing steel sheave grooved for 28 mm rope with rope guard for liftcrane.



No. 59 Luffing Jib

- Optional: 24 m (78') basic No. 59 luffing jib with LMI hardware for "lay out" assembly including PIN connected 7 m (23') butt, (1) 6 m (19' 8") inserts and 11 m (36') top, basic pendants, fixed strut, jib strut, backstay pendants, boom point guide wheel, luffing jib hoist with ratchet and pawl; quick disconnect for jib hoist piping, and 1" luffing jib hoist line (luffing jib preparation is standard).
- Optional: 6 m (19' 8") and 12 m (39' 5") No. 59 luffing jib inserts with steel boom suspension straps and FACT connection system.

Utilize luffing jib inserts in combination with the No. 59 basic luffing jib for total lengths up to 84 m (275').

Lift - Enhancing Attachment

- Optional: Intergral MAX-ER attachment, utilizing base crane boom to increase capacities at radius.

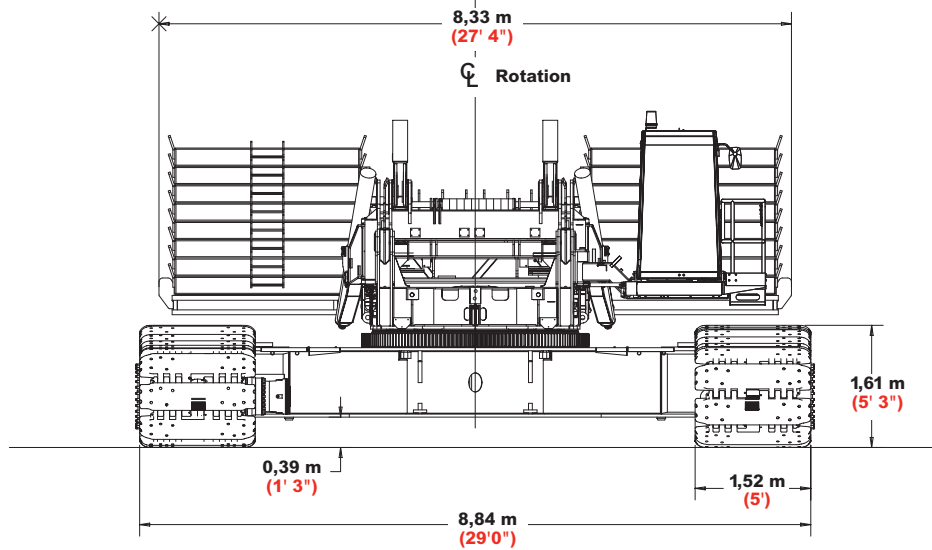
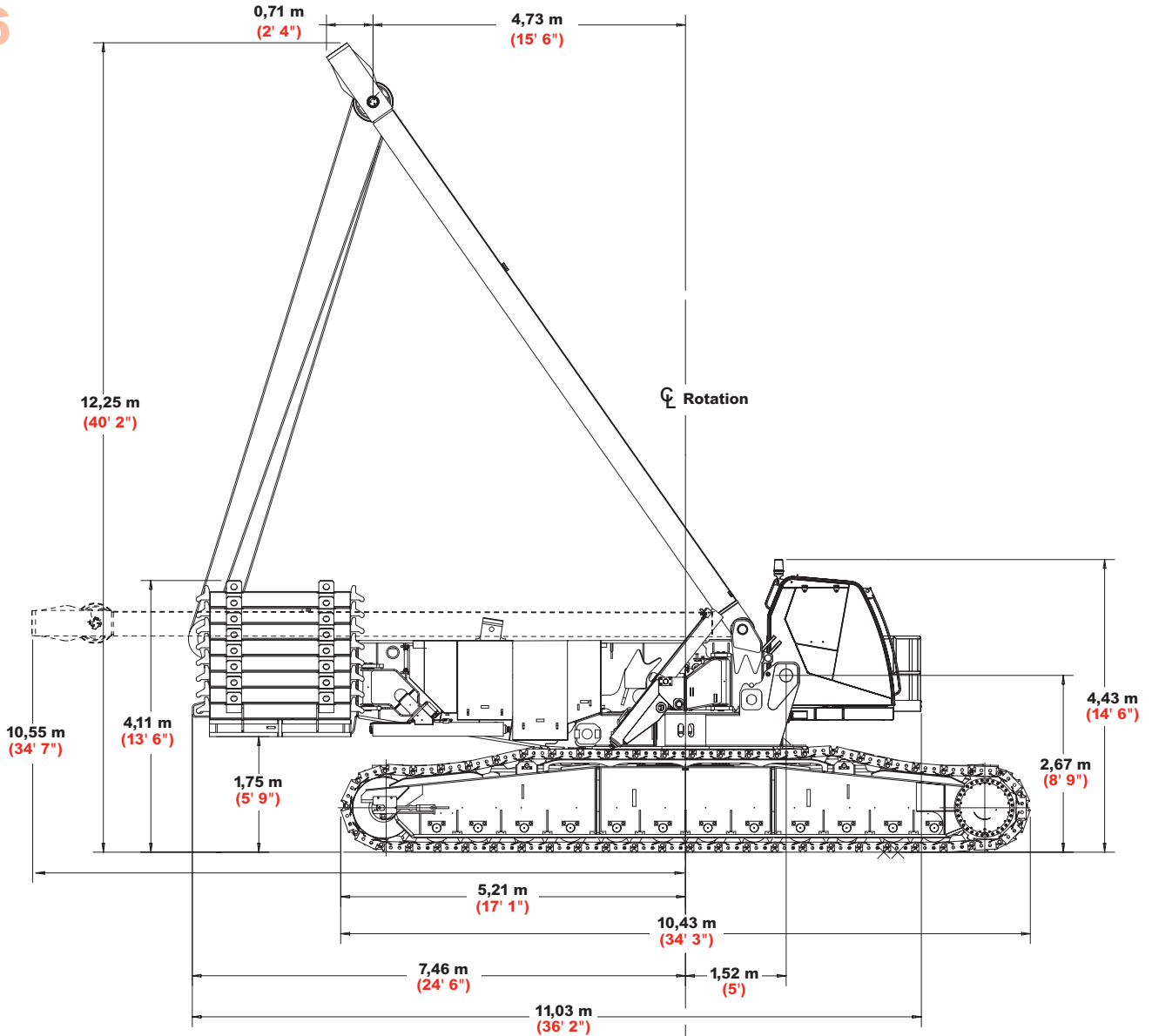
Optional Equipment

- Optional: Blocks and Hooks, each with roller-bearing sheaves for 28 mm wire rope, a roller-bearing swivel hook, a hook latch, and a swivel lock.
- Optional: 18,1 t (20 USt) swivel hook and weight ball.

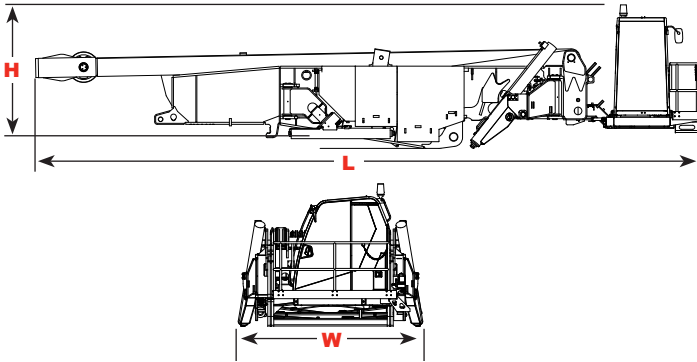
- Optional: 41 t (45 USt) hook block with single roller bearing sheave and roller bearing swivel hook with hook latch and swivel lock (assembly block).
- Optional: 100 t (110 USt) hook block with three roller bearing sheaves and roller bearing swivel hook with hook latch and swivel lock.
- Optional: 180 t (200 USt) hook block with five roller bearing sheaves and roller bearing swivel hook with hook latch and swivel lock.
- Optional: 226 t (250 USt) hook block with seven roller bearing sheaves and roller bearing swivel hook with hook latch and swivel lock.
- Optional: 317 t (350 USt) hook block with seven roller bearing sheaves and roller bearing swivel hook with hook latch and swivel lock.
- Optional: 408 t (450 USt) hook block with thirteen roller bearing sheaves and roller bearing swivel hook with hook latch and swivel lock.
- Optional: Self-erect system includes, jacking cylinders with pads, 41 t (45 USt) assembly block and crawler handling chains.
- Optional: Hydraulic Test Kit: required to properly analyze the performance of the EPIC control system.
- Optional: Service Interval Kits for the regularly scheduled maintenance of general crane operations.
- Optional: Lighting Packages: consult dealer for available options.
- Optional: Special Paint [color(s) other than Manitowoc standard red and black].
- Optional: Custom vinyl decal(s) of customer name and/or logo from artwork supplied by customer.
- Optional: Export Packaging: basic crane, boom and jib sections.

outline dimensions

6



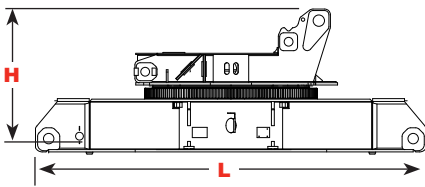
outline dimensions



Rotating Bed Assembly

| | | |
|--------|-----------|-----------|
| Length | 13,25 m | 43' 6" |
| Width | 3,20 m | 10' 6" |
| Height | 2,87 m | 9' 5" |
| Weight | 39 612 kg | 87,330 lb |

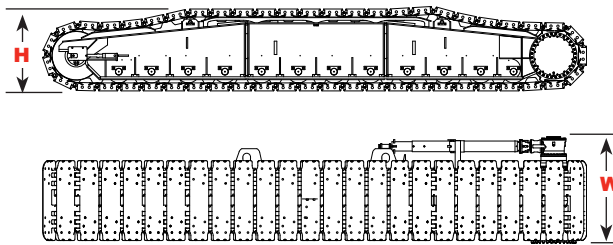
7



Carbody Assembly

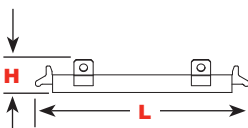
| | | |
|--------|-----------|-----------|
| Length | 6,78 m | 22' 3" |
| Width | 3,00 m | 9' 10" |
| Height | 2,52 m | 8' 3" |
| Weight | 28 161 kg | 62,085 lb |

Note: Weight includes rotating bed adapter frame with bearing turntable, four swing drives, and carbody.



Crawlers

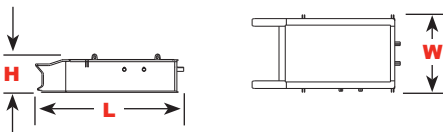
| | | |
|--------|-----------|-----------|
| Length | 10,43 m | 34' 3" |
| Width | 2,03 m | 6' 8" |
| Height | 1,61 m | 5' 3" |
| Weight | 32 665 kg | 72,015 lb |



Upper Counterweight

| | |
|----------|------|
| Series 1 | x 10 |
| Series 2 | x 14 |
| Series 3 | x 16 |

| | | |
|--------|----------|-----------|
| Length | 2,54 m | 8' 4" |
| Width | 2,61 m | 8' 7" |
| Height | 0,41 m | 1' 4" |
| Weight | 8 164 kg | 18,000 lb |



Carbody Center Counterweight

| | |
|----------|-----|
| Series 2 | x 2 |
| Series 3 | x 2 |

| | | |
|--------|-----------|-----------|
| Length | 3,45 m | 11' 4" |
| Width | 1,80 m | 5' 11" |
| Height | 0,89 m | 2' 11" |
| Weight | 13 607 kg | 30,000 lb |

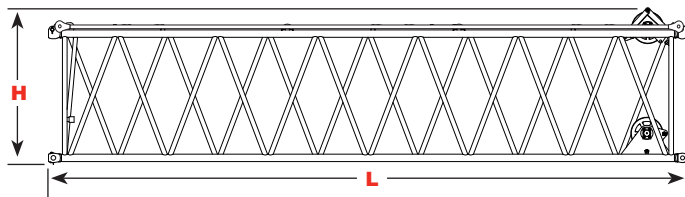
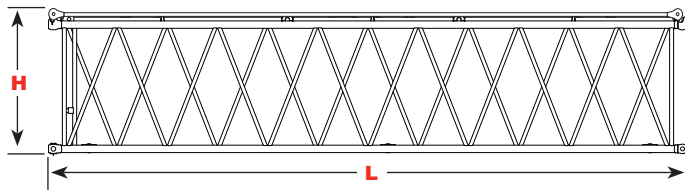
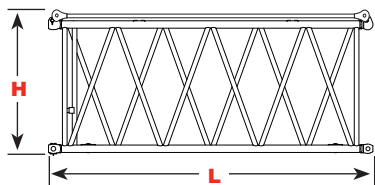
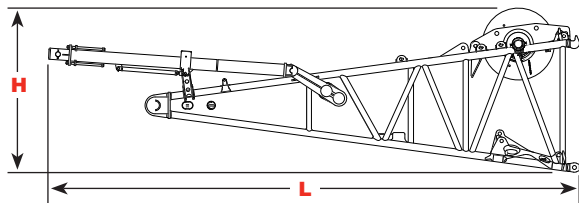
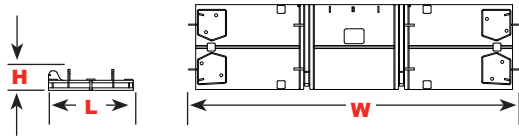
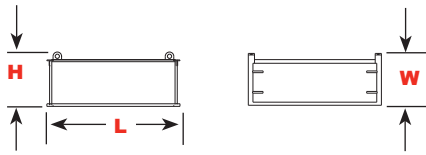
Option

model 16000



outline dimensions

8



Carbody Side Counterweight Series 3 x 4

| | | |
|--------|----------|-----------|
| Length | 2,18 m | 7' 2" |
| Width | 0,86 m | 2' 10" |
| Height | 0,89 m | 2' 11" |
| Weight | 6 803 kg | 15,000 lb |

Upper Counterweight Tray

| | | |
|--------|-----------|-----------|
| Length | 2,14 m | 7' 0" |
| Width | 8,33 m | 27' 4" |
| Height | 0,53 m | 1' 9" |
| Weight | 19 958 kg | 44,000 lb |

No. 58 Boom Butt, Drum 1, Luffing Drum, Wire Rope x 1

| | | |
|---------|-----------|-----------|
| Length | 10,13 m | 33' 3" |
| Width | 2,96 m | 9' 9" |
| Height | 3,10 m | 10' 2" |
| *Weight | 21 609 kg | 47,640 lb |

No. 58 Boom Insert 6,0m (19' 8") & Straps x 1

| | | |
|--------|----------|----------|
| Length | 6,19 m | 20' 3" |
| Width | 2,96 m | 9' 9" |
| Height | 2,67 m | 8' 9" |
| Weight | 2 562 kg | 5,650 lb |

No. 58 Boom Insert 12,0m (39' 5") & Straps x 1

| | | |
|--------|----------|----------|
| Length | 12,19 m | 40' 0" |
| Width | 2,96 m | 9' 9" |
| Height | 2,65 m | 8' 8" |
| Weight | 4 236 kg | 9,340 lb |

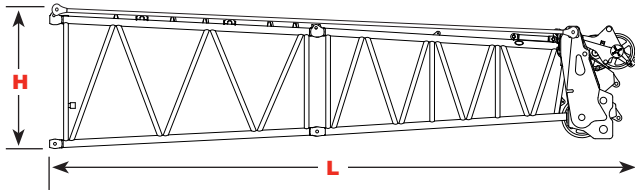
No. 58 Boom Insert Heavy 12,0 (39' 5") with Sheave x 1

| | | |
|--------|----------|-----------|
| Length | 12,19 m | 40' 0" |
| Width | 2,96 m | 9' 9" |
| Height | 2,67 m | 8' 9" |
| Weight | 5 595 kg | 12,335 lb |

Option

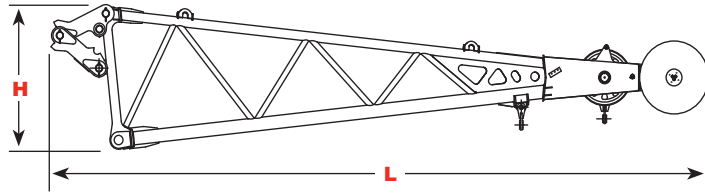
outline dimensions

9



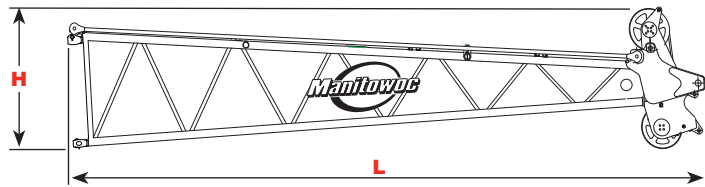
No. 58 Boom Top 5,0 m (16' 5") with 5,0 (16' 5") Transitional Insert & Straps x 1

| | | |
|--------|-----------|-----------|
| Length | 11,41 m | 37' 5" |
| Width | 2,96 m | 9' 9" |
| Height | 2,67 m | 8' 9" |
| Weight | 11 373 kg | 25,075 lb |



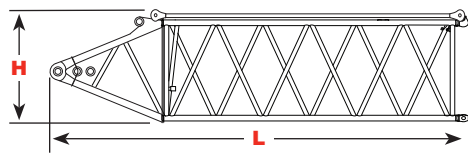
No. 58 Extended Upper Boom Point 7,0 m (23' 0") x 1

| | | |
|--------|----------|----------|
| Length | 9,52 m | 31' 3" |
| Width | 2,60 m | 8' 6" |
| Height | 1,99 m | 6' 6" |
| Weight | 3 674 kg | 8,100 lb |



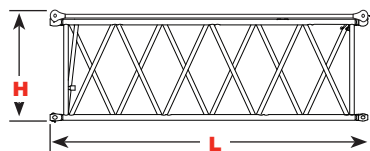
No. 59 Luffing Jib Top 11,0 (36' 1") x 1

| | | |
|--------|----------|-----------|
| Length | 11,95 m | 39' 2" |
| Width | 2,69 m | 8' 10" |
| Height | 2,54 m | 8' 4" |
| Weight | 6 015 kg | 13,260 lb |



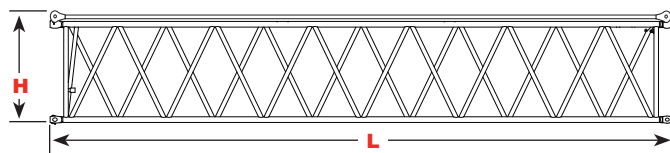
No. 59 Luffing Jib Butt 7,0 (23' 0") x 1

| | | |
|--------|----------|----------|
| Length | 7,15 m | 23' 6" |
| Width | 2,69 m | 8' 10" |
| Height | 2,17 m | 7' 1" |
| Weight | 2 722 kg | 6,000 lb |



No. 59 Jib Insert 6,0 (19' 8") x 1

| | | |
|--------|----------|----------|
| Length | 6,19 m | 20' 3" |
| Width | 2,69 m | 8' 10" |
| Height | 2,17 m | 7' 1" |
| Weight | 1 685 kg | 3,715 lb |



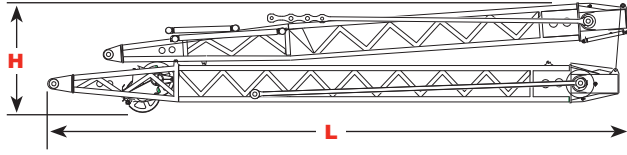
No. 59 Jib Insert 12,0 (39' 5") x 1

| | | |
|--------|----------|----------|
| Length | 12,19 m | 40' 0" |
| Width | 2,69 m | 9' 9" |
| Height | 2,17 m | 7' 1" |
| Weight | 2 928 kg | 6,455 lb |

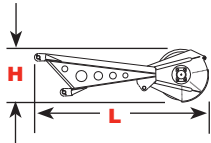
Option

outline dimensions

10



| No. 59 Jib Strut with point sheaves and straps 11,5 m (37' 9") x 1 | | |
|--|----------|-----------|
| Length | 12,46 m | 40' 11" |
| Width | 2,69 m | 8' 10" |
| Height | 2,27 m | 7' 5" |
| Weight | 9 287 kg | 20,475 lb |



| No. 59 Luffing Jib Upper Point Roller Assembly 11,5 m (37' 9")x 1 | | |
|---|--------|----------|
| Length | 2,64 m | 8' 8" |
| Width | 0,41 m | 1' 4" |
| Height | 0,81 m | 2' 8" |
| Weight | 460 kg | 1,014 lb |

Option

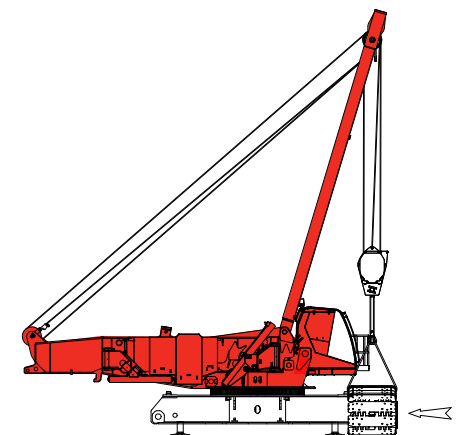
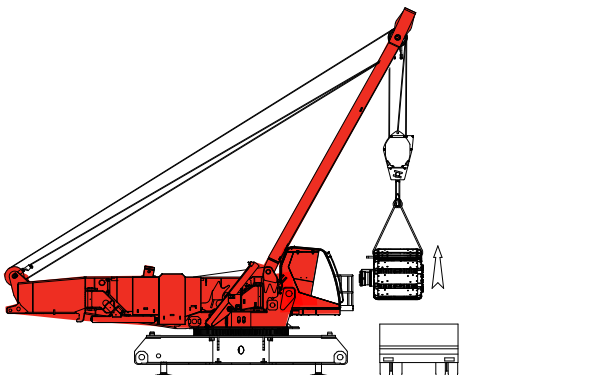
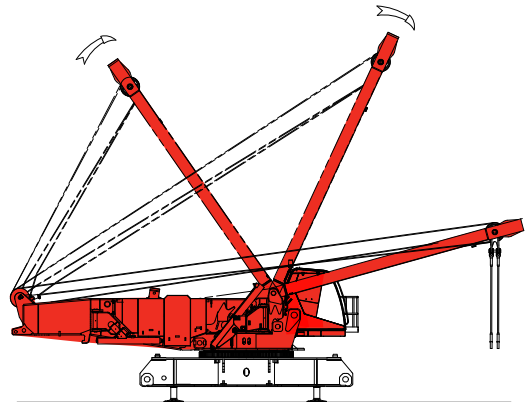
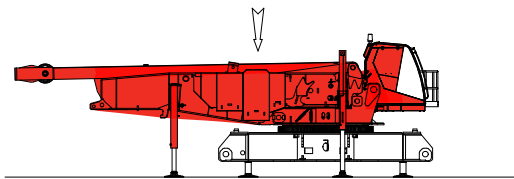
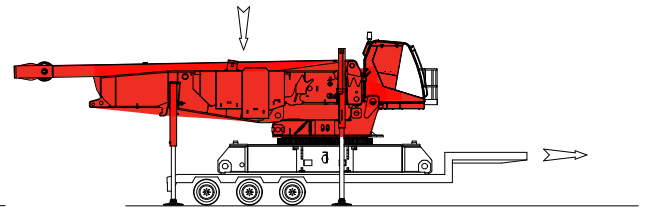
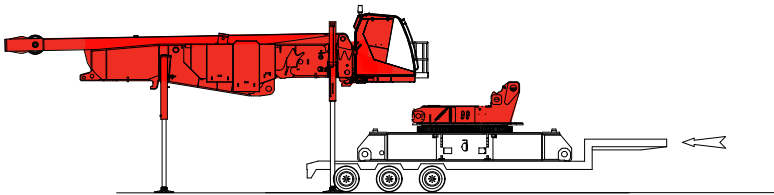
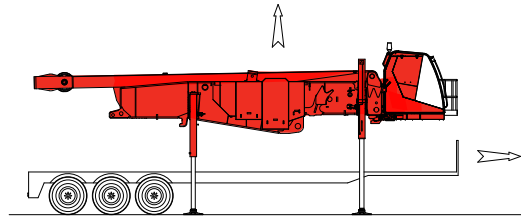
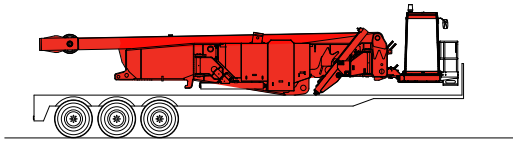
Model 16000 Trailer Load Out Summary

| Weight Each Item Item | No. 58 Boom 108 m (354') with No. 58 Extended Upper Boom Point 7 m (23') | | | | | | | | | | | | | | | | | | | |
|---|---|--------------------|--------------------|--------------------|--------------------|--------------------|--------------------|--------------------|--------------------|--------------------|--------------------|--------------------|--------------------|--------------------|--------------------|--------------------|--------------------|--------------------|--------------------|----|
| | Quantity on Trailer Load # | | | | | | | | | | | | | | | | | | | |
| | kg (lb) | 1 | 2 | 3 | 4 | 5 | 6 | 7 | 8 | 9 | 10 | 11 | 12 | 13 | 14 | 15 | 16 | 17 | 18 | 19 |
| Upperworks Module 39 612 (87,330) | 1 | | | | | | | | | | | | | | | | | | | |
| Carbody and Adapter 28 161 (62,085) | | 1 | | | | | | | | | | | | | | | | | | |
| Crawler Assembly 32 665 (72,015) | | | 1 | 1 | | | | | | | | | | | | | | | | |
| Counterweight Tray 19 958 (44,000) | | | | | | | | | | | | | | | | | | 1 | | |
| Upper Counterweight (Box) 8 164 (18,000) | | | | | 1 | | 1 | 1 | 2 | 1 | 2 | 1 | 1 | 2 | 2 | 2 | | | | |
| Carbody Center Counterweight 13 607 (30,000) | | | | | | | | | | | | | | | | | | | 1 | 1 |
| Carbody Side Counterweight 6 803 (15,000) | | | | | | | | 1 | 1 | | | | | | | | | | 1 | 1 |
| 8,0 m (26'2") No. 58 Boom Butt, Drum 1 w/ Wire Rope 21 609 (47,640) | | | | | | 1 | | | | | | | | | | | | | | |
| 5,0 m (16'5") No. 58 Boom Top & Straps 9 169 (20,215) | | | | | 1 | | | | | | | | | | | | | | | |
| 5,0 m (16'5") No. 58 Boom Trans. Insert & Straps 2 204 (4,860) | | | | | 1 | | | | | | | | | | | | | | | |
| 6,0 m (19'8") No. 58 Boom Insert & Straps 2 562 (5,650) | | | | | | | | | | | | | | 1 | | | | | | |
| 12,0 m (39'5") No. 58 Boom with WRG Boom Insert & Straps 5 595 (12,335) | | | | | | | 1 | | | | | | | | | | | | | |
| 12,0 m (39'5") No. 58 Boom Insert & Straps 4 236 (9,340) | | | | | | | | 1 | 1 | 1 | 1 | 1 | 1 | | | | | | | |
| No. 59 Upper Boom Point 460 (1,014) | | | | | | | | | | | | | | 1 | | | | | | |
| No. 58 Extended Upper Boom Point 7 m (23' 0") 3 674 (8,100) | | | | | | | | | | | | | | | 1 | | | | | |
| 180 t (200 USt) 5 Sheave Load Block 4 309 (9,500) | | | | | | | | | | 1 | | | | | | | | | | |
| 100 t (110 USt) 3 Sheave Load Block 3 402 (7,500) | | | | | | | | | | | | | | 1 | | | | | | |
| Reel Cable - 701 m (2,300') 3 629 (8,000) | | | | | | | | | | | | | 1 | | | | | | | |
| Miscellaneous 907 (2,000) | | | | | | | | | | | | | | | | | 1 | | | |
| | 39 612 (87,330) | 28 161 (62,085) | 32 665 (72,015) | 32 665 (72,015) | 19 538 (43,075) | 21 609 (47,640) | 20 562 (45,335) | 19 203 (42,340) | 20 564 (45,340) | 16 705 (36,840) | 20 564 (45,340) | 16 029 (35,340) | 15 802 (34,840) | 19 350 (42,664) | 20 002 (44,100) | 18 414 (40,600) | 19 958 (44,000) | 20 410 (45,000) | 20 410 (45,000) | |
| | 1 | 2 | 3 | 4 | 5 | 6 | 7 | 8 | 9 | 10 | 11 | 12 | 13 | 14 | 15 | 16 | 17 | 18 | 19 | |

* Note: Does not include blocking, strapping ect.

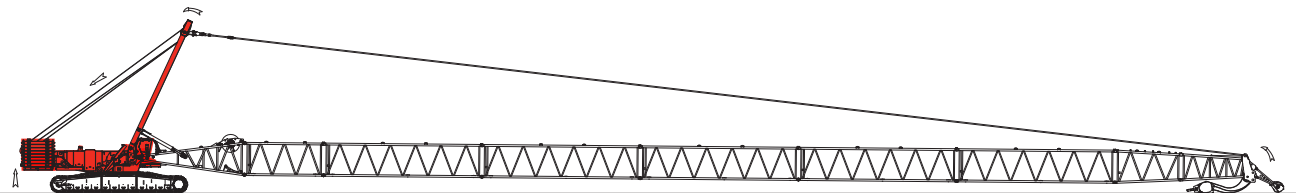
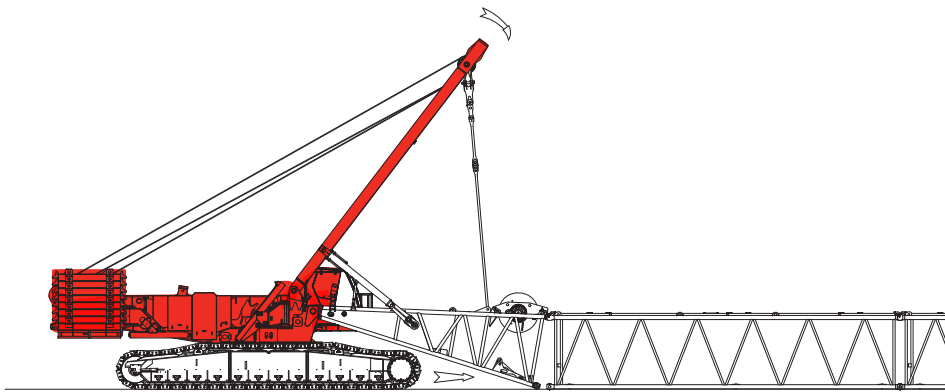
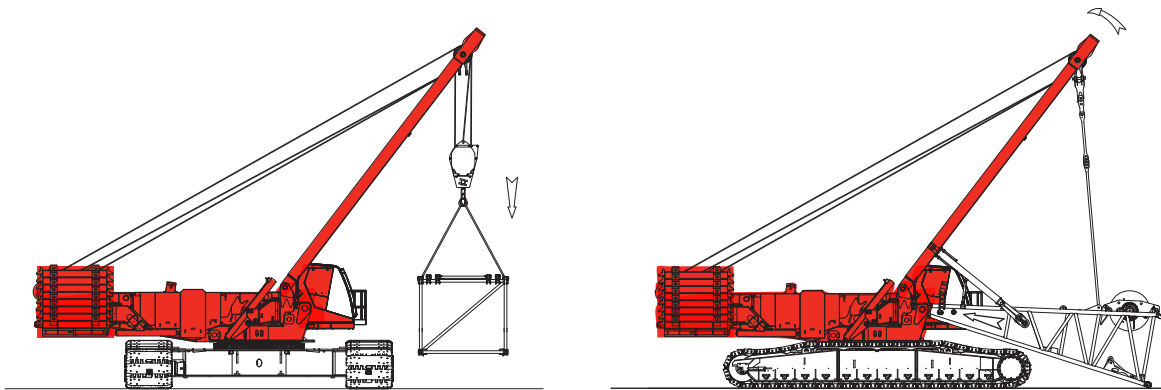
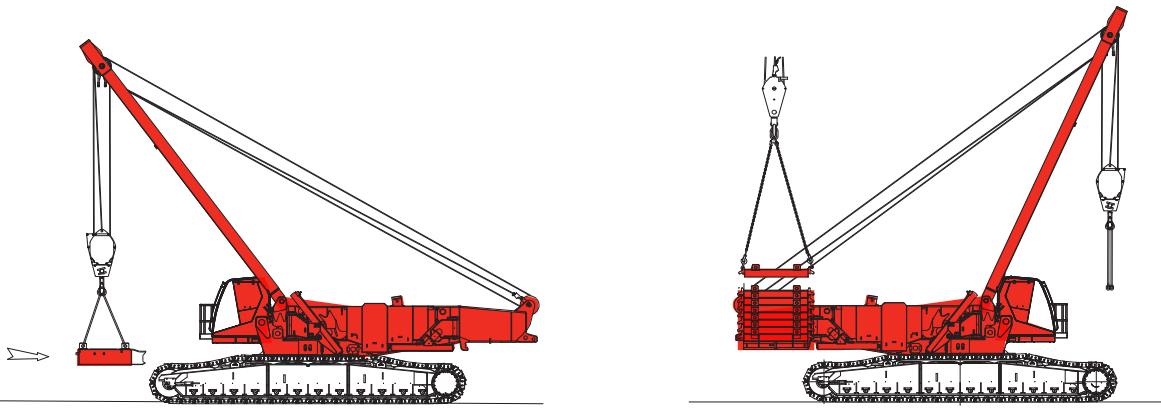
crane assembly - undecked

12



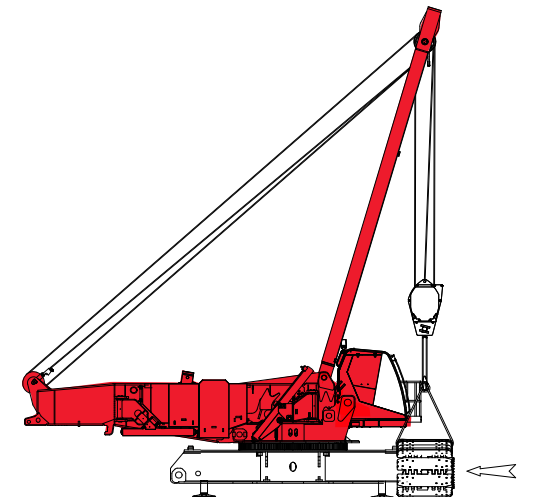
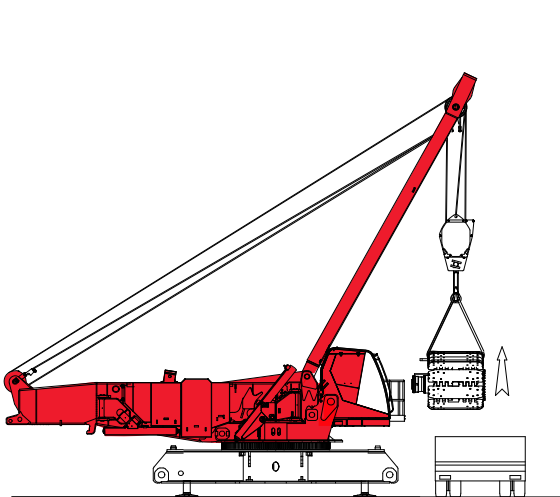
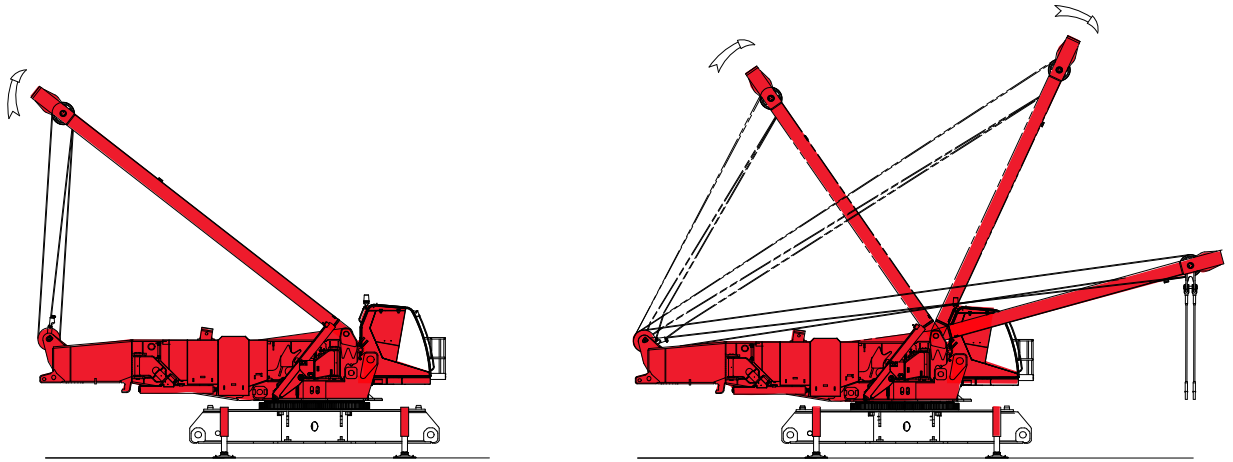
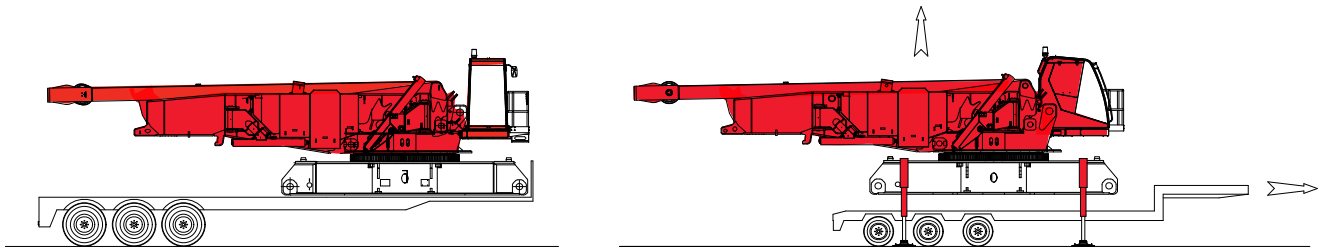
crane assembly - undecked

13



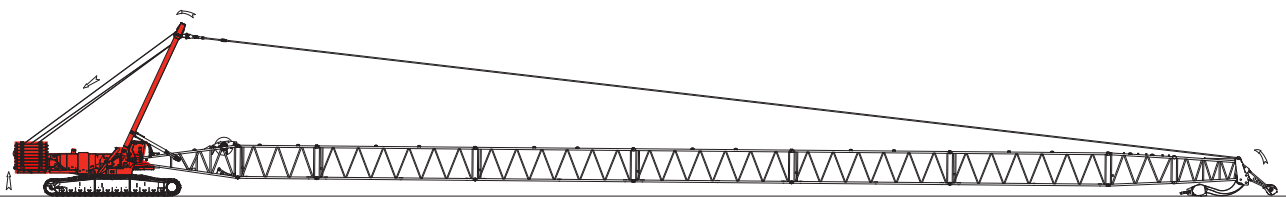
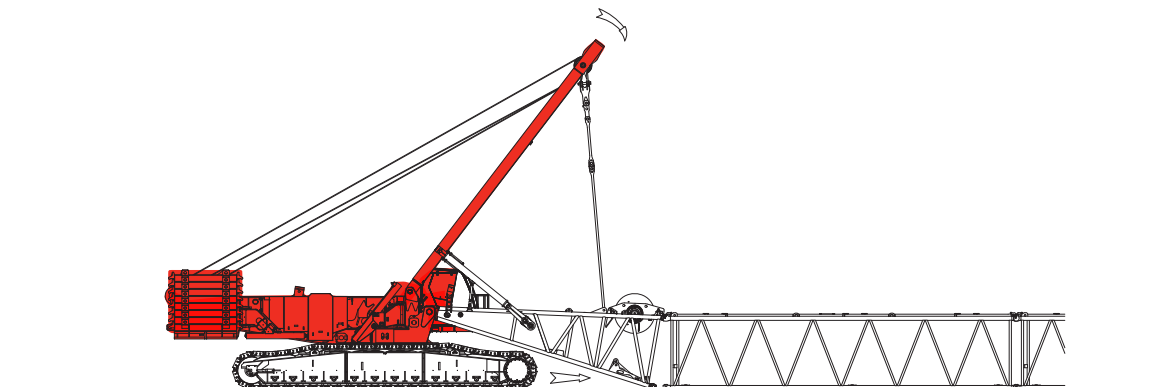
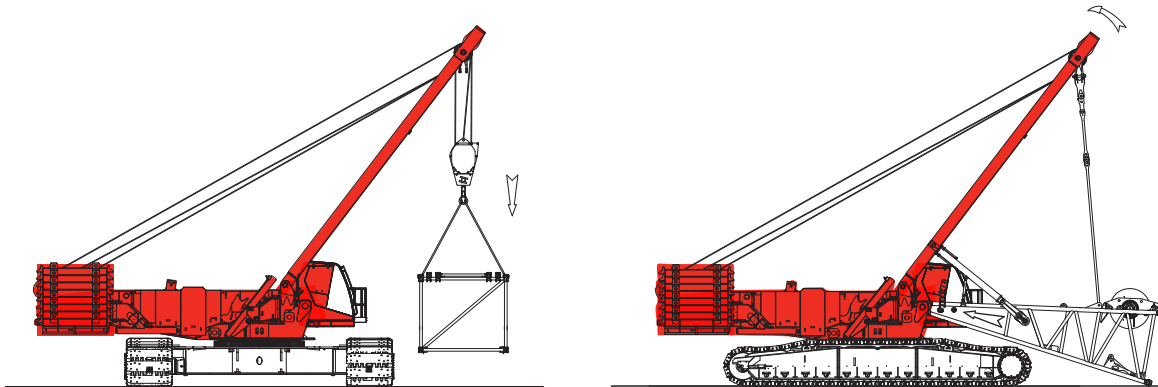
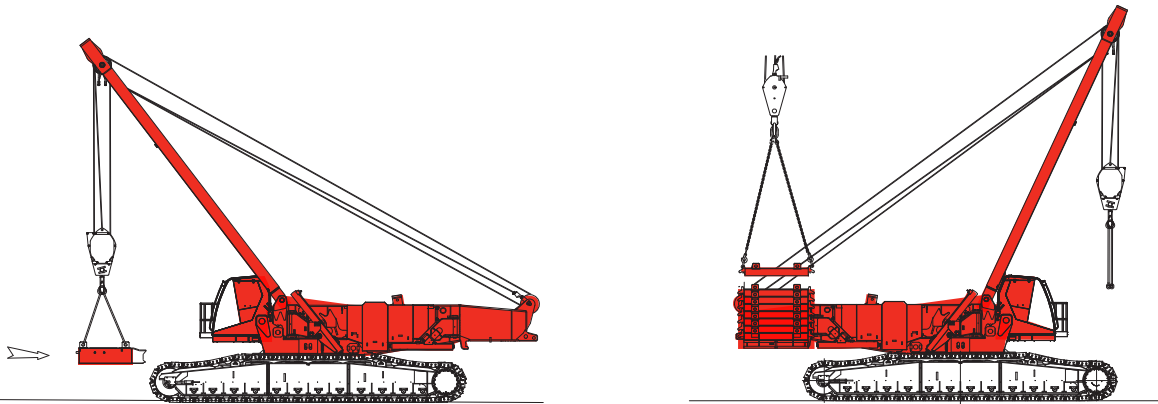
crane assembly - decked

14



crane assembly - decked

15



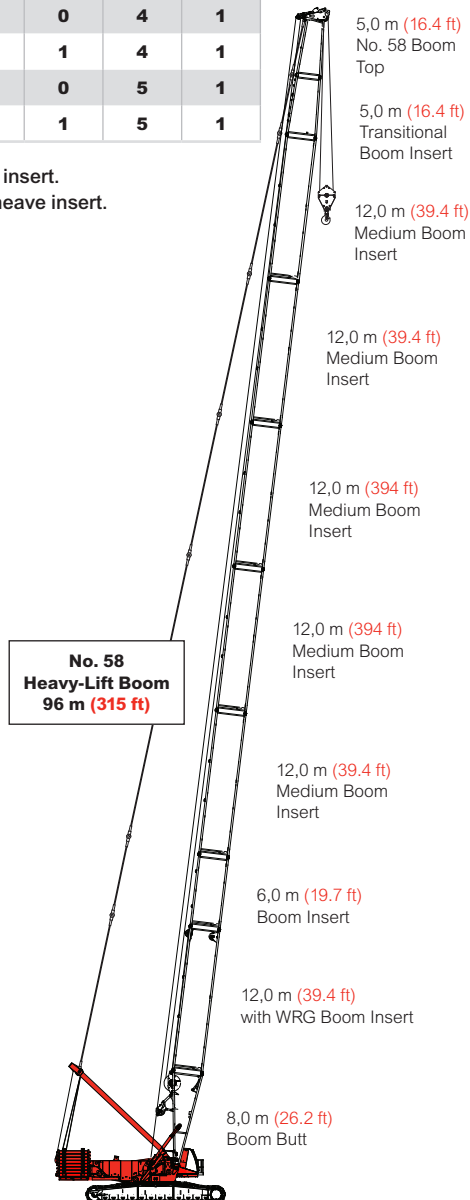
boom combinations

16

No. 58 Main Boom with Heavy-Lift Top Combinations

| Boom Length m (ft) | Boom Inserts m (ft) | | | |
|-----------------------|---------------------|--------------|----------------|------------------|
| | 5,0* (6.4) | 6,0 (9.7) | 12,0 (39.4) | 12,0** (39.4) |
| 30 (98.4) | 1 | - | - | 1 |
| 36 (118.1) | 1 | 1 | - | 1 |
| 42 (137.8) | 1 | 0 | 1 | 1 |
| 48 (157.5) | 1 | 1 | 1 | 1 |
| 54 (177.2) | 1 | 0 | 2 | 1 |
| 60 (196.9) | 1 | 1 | 2 | 1 |
| 66 (216.5) | 1 | 0 | 3 | 1 |
| 72 (236.2) | 1 | 1 | 3 | 1 |
| 78 (255.9) | 1 | 0 | 4 | 1 |
| 84 (275.6) | 1 | 1 | 4 | 1 |
| 90 (295.3) | 1 | 0 | 5 | 1 |
| 96 (315.0) | 1 | 1 | 5 | 1 |

* transition boom insert.
** with auxiliary sheave insert.

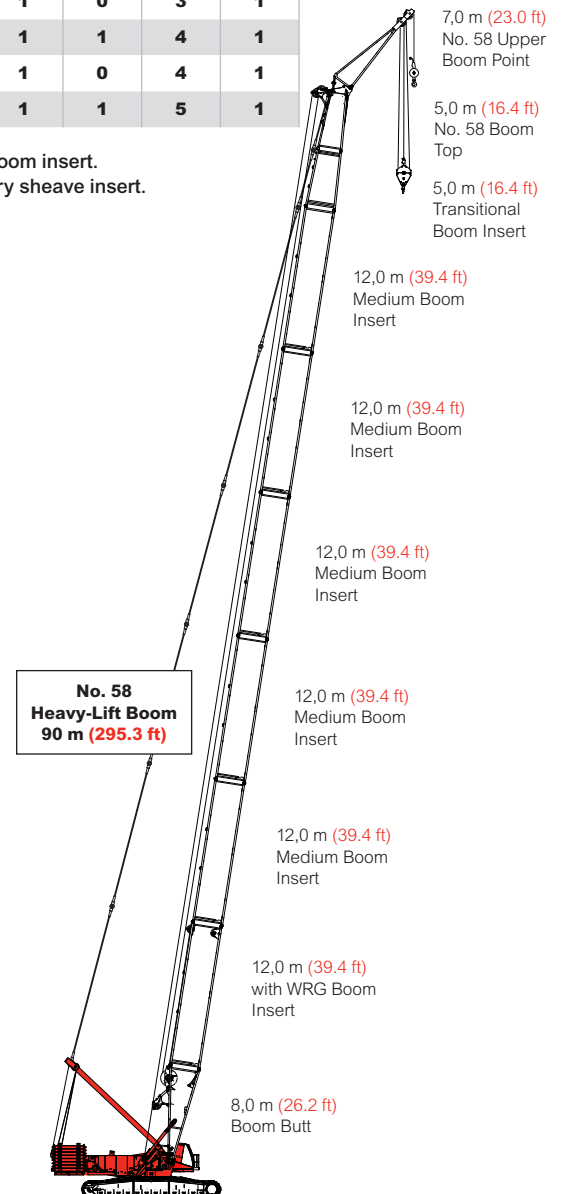


Model 16000
No. 58 Heavy-Lift Main Boom
96 m (315 ft)

No. 58 Main Boom with 95 t (104.7 USt) Upper Boom Point Combinations

| Boom Length m (ft) | Boom Inserts m (ft) | | | |
|-----------------------|---------------------|--------------|----------------|------------------|
| | 5,0* (6.4) | 6,0 (9.7) | 12,0 (39.4) | 12,0** (39.4) |
| 30 (98.4) | 1 | - | - | 1 |
| 36 (118.1) | 1 | 1 | - | 1 |
| 42 (137.8) | 1 | 0 | 1 | 1 |
| 48 (157.5) | 1 | 1 | 1 | 1 |
| 54 (177.2) | 1 | 0 | 2 | 1 |
| 60 (196.9) | 1 | 1 | 2 | 1 |
| 66 (216.5) | 1 | 1 | 3 | 1 |
| 72 (236.2) | 1 | 0 | 3 | 1 |
| 78 (255.9) | 1 | 1 | 4 | 1 |
| 84 (275.6) | 1 | 0 | 4 | 1 |
| 90 (295.3) | 1 | 1 | 5 | 1 |

* transition boom insert.
** with auxiliary sheave insert.



Model 16000
No. 58 Heavy-Lift Main Boom with
90 t (104.7 USt) Detachable Upper Boom
90 m (295.3 ft)

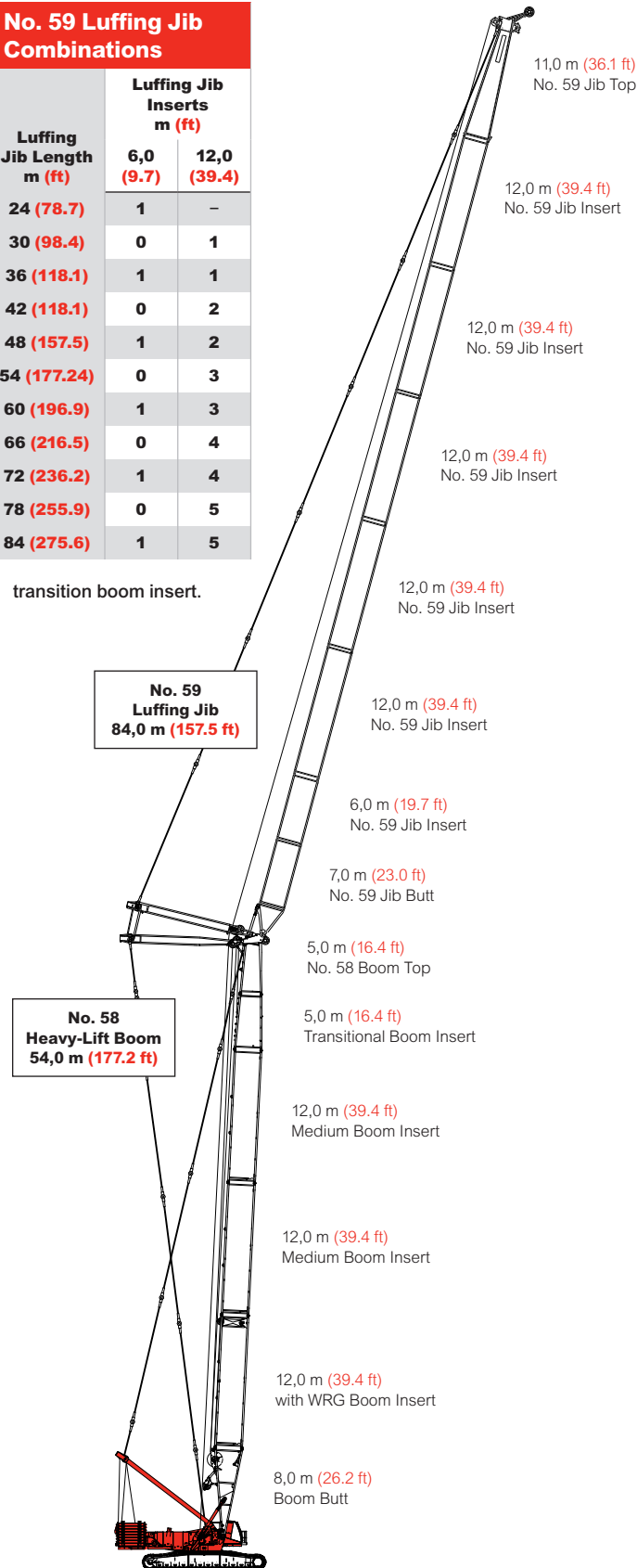
boom combinations

17

No. 59 Luffing Jib Combinations

| Luffing Jib Length m (ft) | Luffing Jib Inserts m (ft) | |
|------------------------------|-------------------------------|----------------|
| | 6,0 (9.7) | 12,0 (39.4) |
| 24 (78.7) | 1 | – |
| 30 (98.4) | 0 | 1 |
| 36 (118.1) | 1 | 1 |
| 42 (118.1) | 0 | 2 |
| 48 (157.5) | 1 | 2 |
| 54 (177.24) | 0 | 3 |
| 60 (196.9) | 1 | 3 |
| 66 (216.5) | 0 | 4 |
| 72 (236.2) | 1 | 4 |
| 78 (255.9) | 0 | 5 |
| 84 (275.6) | 1 | 5 |

* transition boom insert.

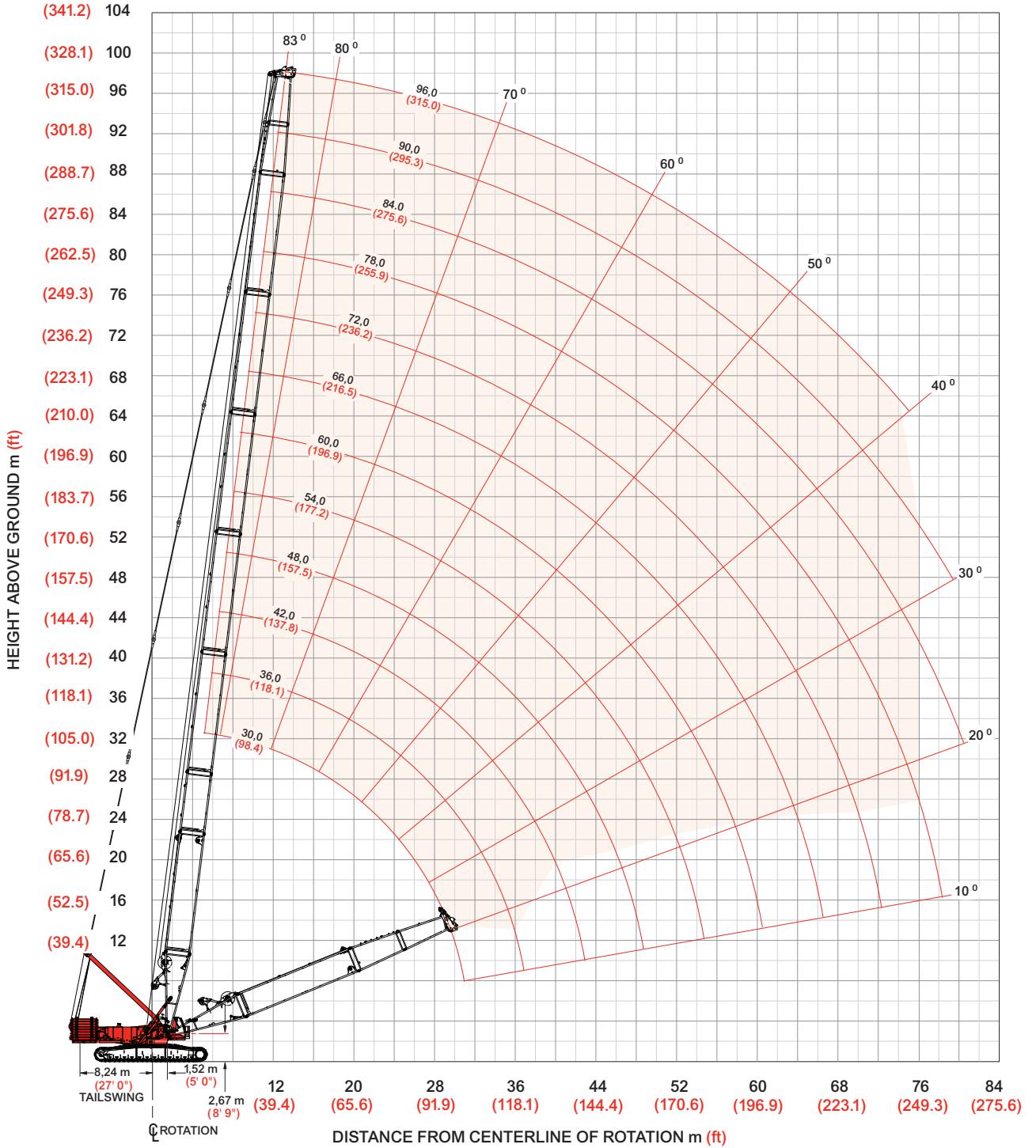


Model 16000
No. 59 Luffing Jib on
No. 58 Heavy-Lift Main Boom
132 m (433.1 ft)

heavy-lift boom range diagrams

18

Liftcrane Boom Capacities - Model 16000 Series 3
No. 58 Heavy-lift Main Boom with 9,75 m (32 ft) Live mast with 2 Lead Lines



heavy-lift boom load charts

Liftcrane Boom Capacities - Model 16000 Series 3
No. 58 Heavy -lift Main Boom with 9,75 m (32 ft) Live mast with 2 Lead Lines

150 590 kg (332,000 lb) Counterweight 54 430 kg (120,000 lb) Carbody Counterweight

360° Rating

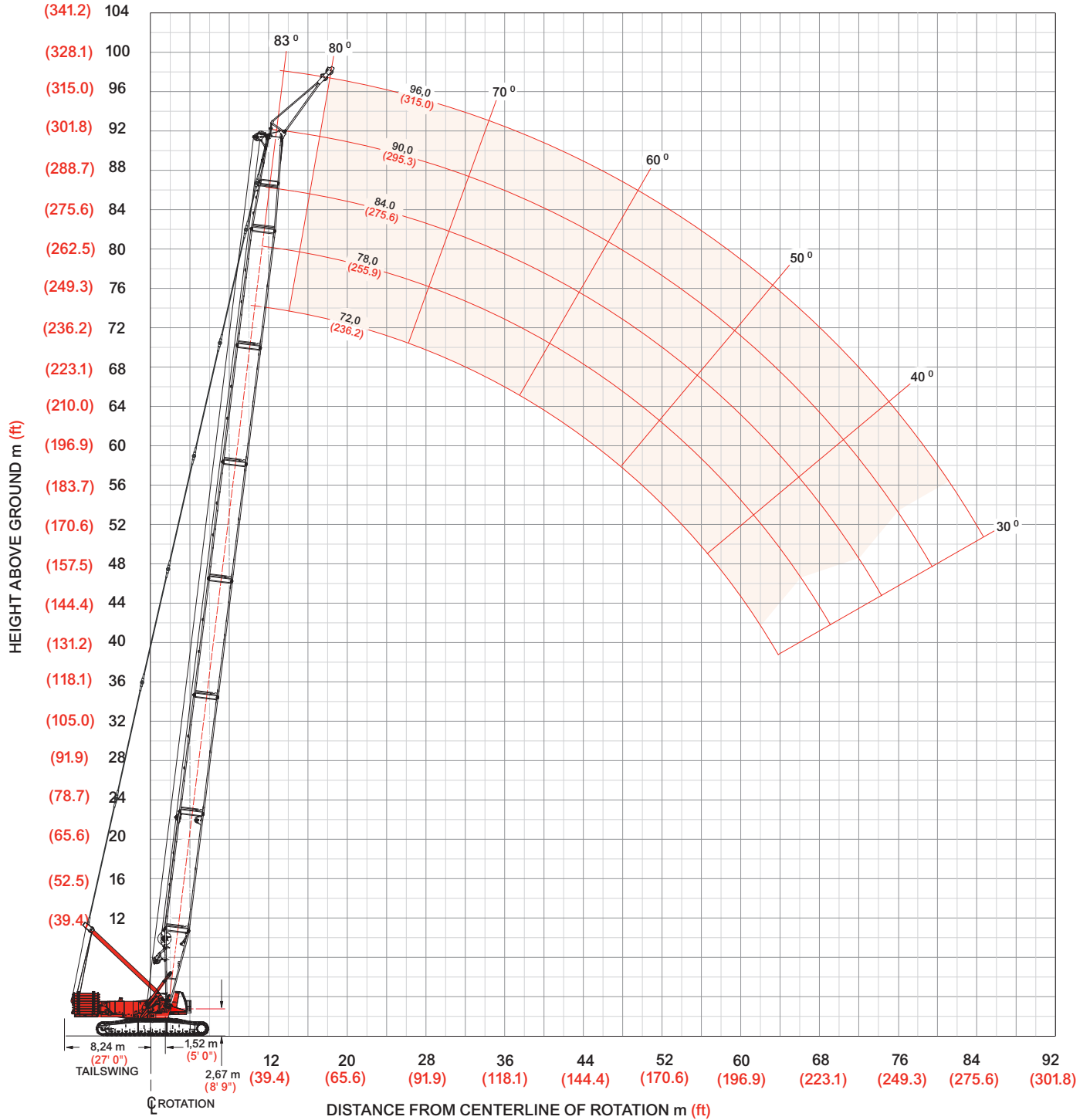
kg (lb) x 1 000

| Boom m (ft) | 30,0 (98.4) | 36,0 (118.1) | 42,0 (137.8) | 48,0 (157.5) | 54,0 (177.2) | 60,0 (196.9) | 66,0 (216.5) | 72,0 (236.2) | 78,0 (255.9) | 84,0 (275.6) | 90,0 (295.3) | 96,0 (315.0) |
|----------------|------------------|------------------|------------------|------------------|------------------|------------------|------------------|------------------|------------------|------------------|-----------------|-----------------|
| Radius | | | | | | | | | | | | |
| 6,4 (21) | 400,0 (881.9) | | | | | | | | | | | |
| 8,0 (26) | 323,8 (720.5) | 323,3 (719.3) | 283,4 (625.7) | | | | | | | | | |
| 10,0 (32) | 256,4 (581.7) | 256,1 (581.0) | 256,6 (580.8) | 257,2 (579.6) | 216,1 (483.0) | | | | | | | |
| 12,0 (40) | 194,8 (419.1) | 195,1 (419.7) | 195,5 (420.5) | 195,4 (420.4) | 193,2 (420.4) | 181,9 (397.4) | 159,6 (348.9) | 147,0 (321.3) | — (302.9) | | | |
| 14,0 (45) | 153,7 (349.9) | 153,9 (350.3) | 154,2 (351.0) | 154,1 (350.7) | 154,0 (350.6) | 154,5 (350.0) | 145,6 (325.9) | 134,0 (299.5) | 129,7 (288.7) | 113,7 (252.0) | 95,5 (211.6) | |
| 18,0 (60) | 106,3 (229.3) | 106,4 (229.5) | 106,6 (229.9) | 106,3 (229.3) | 106,2 (229.0) | 105,8 (228.1) | 105,5 (227.5) | 105,7 (226.4) | 105,4 (225.6) | 103,4 (224.5) | 89,4 (196.3) | 77,2 (169.5) |
| 22,0 (70) | 79,6 (183.6) | 79,7 (183.8) | 79,9 (184.2) | 79,5 (183.4) | 79,4 (183.1) | 78,9 (182.0) | 78,5 (181.3) | 78,0 (180.2) | 77,6 (179.2) | 77,0 (178.0) | 76,8 (176.9) | 72,5 (161.6) |
| 26,0 (85) | 62,4 (138.5) | 62,5 (138.7) | 62,7 (139.1) | 62,4 (138.3) | 62,1 (137.8) | 61,6 (136.7) | 61,3 (135.9) | 60,7 (134.6) | 60,2 (133.5) | 59,6 (132.2) | 59,0 (131.0) | 58,4 (129.6) |
| 30,0 (100) | 50,3 (108.2) | 50,5 (108.9) | 50,7 (109.3) | 50,3 (108.5) | 50,1 (108.0) | 49,6 (106.8) | 49,2 (106.0) | 48,6 (104.6) | 48,1 (103.5) | 47,5 (102.1) | 46,9 (100.9) | 46,2 (99.4) |
| 34,0 (110) | | 41,6 (93.9) | 41,9 (94.5) | 41,5 (93.7) | 41,3 (93.2) | 40,8 (92.0) | 40,3 (91.1) | 39,8 (89.8) | 39,2 (88.6) | 38,5 (87.1) | 38,0 (85.9) | 37,3 (84.4) |
| 38,0 (120) | | — (81.5) | 35,0 (82.3) | 34,7 (81.6) | 34,5 (81.1) | 33,9 (79.9) | 33,6 (79.0) | 32,9 (77.6) | 32,4 (76.4) | 31,7 (74.9) | 31,1 (73.7) | 30,4 (72.1) |
| 40,0 (130) | | | 32,1 (72.1) | 31,9 (71.5) | 31,7 (71.1) | 31,1 (69.8) | 30,7 (69.0) | 30,1 (67.5) | 29,5 (66.3) | 28,8 (64.8) | 28,3 (63.6) | 27,6 (62.0) |
| 44,0 (140) | | | | 27,0 (62.9) | 26,8 (62.5) | 26,2 (61.3) | 25,9 (60.5) | 25,2 (59.0) | 24,7 (57.8) | 24,0 (56.3) | 23,4 (55.0) | 22,7 (53.4) |
| 48,0 (155) | | | | — (52.1) | 22,8 (52.0) | 22,3 (50.8) | 21,9 (49.9) | 21,2 (48.5) | 20,7 (47.2) | 20,0 (45.7) | 19,4 (44.5) | 18,7 (42.8) |
| 52,0 (170) | | | | | 19,4 (43.2) | 18,9 (42.2) | 18,5 (41.3) | 17,9 (39.9) | 17,4 (38.7) | 16,6 (37.1) | 16,1 (35.9) | 15,3 (34.2) |
| 56,0 (180) | | | | | | 16,1 (37.2) | 15,7 (36.5) | 15,1 (35.0) | 14,5 (33.8) | 13,8 (32.2) | 13,3 (31.0) | 12,5 (29.3) |
| 60,0 (195) | | | | | | — (30.7) | 13,3 (30.1) | 12,6 (28.7) | 12,1 (27.5) | 11,4 (25.9) | 10,8 (24.7) | 10,1 (23.0) |
| 64,0 (210) | | | | | | | 11,1 (24.6) | 10,5 (23.3) | 10,0 (22.1) | 9,3 (20.5) | 8,7 (19.3) | 7,9 (17.6) |
| 68,0 (220) | | | | | | | | 8,6 (20.0) | 8,1 (18.9) | 7,4 (17.3) | 6,8 (16.1) | 6,1 (14.5) |
| 70,0 (230) | | | | | | | | 7,7 (17.1) | 7,2 (16.0) | 6,5 (14.4) | 6,0 (13.2) | 5,3 (11.6) |
| 76,0 (255) | | | | | | | | | 4,9 (—) | 4,2 (8.1) | 3,7 (7.0) | |

upper boom point range diagram

20

Liftcrane Boom Capacities - Model 16000 Series 3
 No. 58 Heavy-lift Main Boom with Extended Upper Boom Point 7 m (23')



upper boom point load charts

21

Liftcrane Boom Capacities - Model 16000 No. 58 Heavy Lift Main Boom with 7,0 m (23') Extended Upper Boom Point

150 590 kg (332,000 lb) Counterweight
54 430 kg (120,000 lb) Carbody Counterweight

360° Rating kg (lb) x 1 000

| Boom m (ft) | 66,0 (216.5) | 72,0 (236.2) | 78,0 (255.9) | 84,0 (275.6) | 90,0 (295.3) |
|----------------|-----------------|-----------------|-----------------|-----------------|-----------------|
| Radius | | | | | |
| 15,2 (50) | 97,6 (215.2) | | | | |
| 16,8 (55) | 97,6 (215.2) | 97,6 (215.2) | 91,3 (201.5) | 87,8 (193.7) | |
| 18,0 (60) | 97,6 (215.2) | 97,6 (215.2) | 89,6 (196.8) | 86,5 (190.1) | |
| 20,0 (65) | 95,5 (212.3) | 95,1 (211.5) | 87,1 (192.6) | 84,4 (186.6) | 74,6 (165.0) |
| 22,0 (75) | 82,7 (172.6) | 82,3 (171.7) | 82,7 (170.8) | 81,1 (169.8) | 72,5 (158.2) |
| 24,0 (80) | 72,9 (157.2) | 72,4 (156.1) | 72,0 (155.2) | 71,8 (154.2) | 70,1 (153.2) |
| 26,0 (90) | 64,8 (132.2) | 64,4 (131.1) | 63,9 (130.1) | 63,4 (128.9) | 63,0 (127.9) |
| 28,0 (95) | 58,1 (122.0) | 57,6 (120.8) | 57,1 (119.8) | 56,6 (118.6) | 56,1 (117.5) |
| 30,0 (100) | 52,4 (112.9) | 51,9 (111.7) | 51,4 (110.7) | 50,8 (109.4) | 50,3 (108.3) |
| 32,0 (105) | 45,5 (104.9) | 47,0 (103.6) | 46,5 (102.5) | 45,9 (101.3) | 45,4 (100.2) |
| 34,0 (115) | 43,3 (91.0) | 42,7 (89.7) | 42,2 (88.6) | 41,6 (87.3) | 41,1 (86.2) |
| 38,0 (125) | 36,2 (79.6) | 35,6 (78.3) | 35,1 (77.2) | 34,5 (75.8) | 33,9 (74.6) |
| 40,0 (135) | 33,3 (70.1) | 32,7 (68.7) | 32,2 (67.6) | 31,5 (66.2) | 31,0 (65.0) |
| 44,0 (145) | 28,3 (62.0) | 27,7 (60.6) | 27,1 (59.4) | 26,5 (58.0) | 25,9 (56.8) |
| 48,0 (160) | 24,2 (51.8) | 23,5 (50.4) | 23,0 (49.2) | 22,3 (47.7) | 21,8 (46.5) |
| 52,0 (175) | 20,7 (43.5) | 20,1 (42.1) | 19,5 (40.8) | 18,9 (39.4) | 18,3 (38.2) |
| 56,0 (185) | 17,8 (38.7) | 17,1 (37.3) | 16,6 (36.1) | 15,9 (34.6) | 15,4 (33.4) |
| 60,0 (200) | 15,2 (32.4) | 14,6 (31.1) | 14,0 (29.8) | 13,4 (28.4) | 12,8 (27.1) |
| 64,0 (210) | | 12,4 (27.4) | 11,8 (26.2) | 11,2 (24.7) | 10,6 (23.5) |
| 68,0 (225) | | | 9,9 (21.3) | 9,2 (19.8) | 8,7 (18.7) |
| 72,0 (240) | | | 8,1 (17.1) | 7,5 (15.6) | 7,0 (14.4) |
| 76,0 (250) | | | | 5,9 (13.0) | 5,4 (11.9) |
| 82,0 (270) | | | | | 3,4 (7.4) |

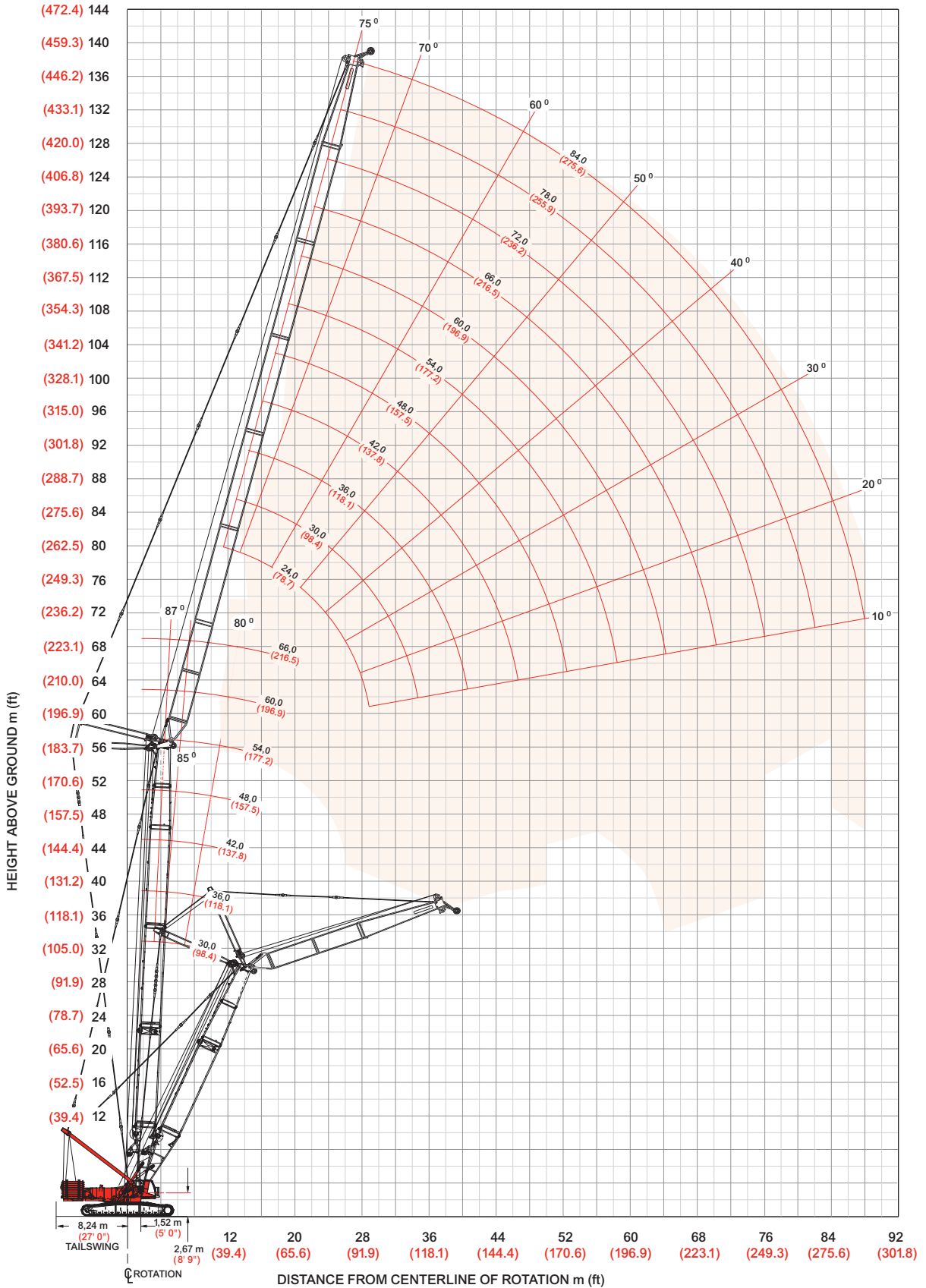
model 16000



luffing jib range diagram

22

Liftcrane Boom Capacities - Model 16000 Series 3
No. 58 Heavy-lift Main Boom with No. 59 Luffing Jib



model 16000
Manitowoc

Luffing jib load charts

23

Liftcrane Boom Capacities - Model 16000 Series 3
No. 59 Luffing Jib on No. 58 Heavy Lift Main Boom

150 590 kg (332,000 lb) Counterweight 54 430 kg (120,000 lb) Carbody Counterweight
 360° Rating kg (lb) x 1 000

87° Boom Angle

Luffing Jib Length 24,0 m (78.7 ft)

| Boom m (ft) | 30,0 (98.4) | 42,0 (137.8) | 54,0 (177.2) | 66,0 (216.5) |
|-------------|---------------|---------------|---------------|--------------|
| Radius | | | | |
| 11,6 (38) | 185,2 (408.5) | | | |
| 14,0 (45) | 157,7 (354.2) | 151,0 (333.0) | 117,4 (262.3) | 99,6 (222.2) |
| 18,0 (60) | 121,1 (260.7) | 112,6 (244.8) | 97,8 (213.0) | 84,8 (184.8) |
| 22,0 (75) | 92,7 (194.7) | 92,7 (194.5) | 82,2 (174.9) | 72,3 (154.3) |
| 26,0 (90) | 74,6 (147.9) | 73,9 (147.8) | 69,5 (144.3) | 62,1 (129.5) |
| 32,0 (105) | | | | |
| 38,0 (125) | | | | |
| 44,0 (145) | | | | |
| 52,0 (175) | | | | |
| 56,0 (185) | | | | |
| 60,0 (195) | | | | |

Luffing Jib Length 36,0 m (118.1 ft)

| Boom m (ft) | 30,0 (98.4) | 42,0 (137.8) | 54,0 (177.2) | 60,0 (196.9) |
|-------------|---------------|---------------|--------------|--------------|
| Radius | | | | |
| 15,2 (50) | 136,1 (300.2) | 116,8 (252.6) | | |
| 16,0 (55) | 131,2 (278.3) | 113,3 (242.0) | — (205.4) | — (194.5) |
| 18,0 (60) | 118,9 (258.6) | 104,3 (227.5) | 89,0 (194.3) | 84,5 (184.4) |
| 22,0 (75) | 92,3 (193.7) | 89,1 (190.3) | 77,1 (165.1) | 73,3 (157.0) |
| 26,0 (90) | 74,4 (153.3) | 74,3 (152.9) | 67,1 (141.2) | 64,0 (134.6) |
| 32,0 (105) | 57,0 (125.8) | 56,9 (125.5) | 55,2 (121.7) | 52,5 (115.8) |
| 38,0 (125) | 45,6 (100.2) | 45,5 (100.0) | 44,8 (98.5) | 43,0 (94.7) |
| 44,0 (145) | | | | |
| 52,0 (175) | | | | |
| 56,0 (185) | | | | |
| 60,0 (195) | | | | |

Luffing Jib Length 48,0 m (157.5 ft)

| Boom m (ft) | 30,0 (98.4) | 42,0 (137.8) | 54,0 (177.2) | 60,0 (196.9) |
|-------------|---------------|--------------|--------------|--------------|
| Radius | | | | |
| 18,3 (60) | 107,4 (236.8) | 92,1 (203.2) | | |
| 22,0 (75) | 91,9 (191.9) | 81,6 (175.1) | 70,3 (151.1) | 66,6 (142.9) |
| 24,0 (80) | 81,6 (176.5) | 75,6 (166.8) | 66,2 (144.3) | 62,6 (136.6) |
| 30,0 (100) | 61,2 (132.2) | 61,0 (131.8) | 55,5 (120.9) | 52,6 (114.6) |
| 34,0 (115) | 52,0 (110.2) | 51,8 (109.9) | 49,5 (106.2) | 47,0 (100.7) |
| 38,0 (125) | 44,9 (98.8) | 44,8 (98.6) | 44,4 (97.7) | 42,0 (92.5) |
| 42,0 (140) | 39,3 (85.0) | 39,2 (84.8) | 39,1 (84.4) | 37,6 (81.5) |
| 46,0 (155) | 34,8 (74,0) | 34,7 (73.8) | 34,5 (73.4) | 33,7 (71.7) |
| 52,0 (175) | | | | 27,0 (54.3) |
| 56,0 (185) | | | | |
| 60,0 (195) | | | | |

Luffing Jib Length 60,0 m (196.9 ft)

| Boom m (ft) | 30,0 (98.4) | 42,0 (137.8) | 54,0 (177.2) | 60,0 (196.9) |
|-------------|--------------|--------------|--------------|--------------|
| Radius | | | | |
| 21,3 (70) | 86,0 (189.7) | 73,5 (162.2) | | |
| 24,0 (80) | 79,1 (172.5) | 69,3 (151.1) | 58,2 (128.1) | 51,8 (114.1) |
| 28,0 (95) | 65,9 (139.2) | 62,1 (133.6) | 53,2 (114.7) | 49,6 (107.3) |
| 34,0 (115) | 51,1 (108.2) | 50,9 (107.8) | 45,8 (98.3) | 43,2 (92.8) |
| 40,0 (135) | 41,1 (87.2) | 40,9 (86.9) | 39,4 (84.4) | 37,2 (79.7) |
| 48,0 (160) | 31,9 (69.0) | 31,8 (68.7) | 31,7 (68.3) | 30,4 (65.9) |
| 56,0 (185) | 25,6 (55.9) | 25,5 (55.3) | 25,3 (55.3) | 24,9 (54.4) |
| 64,0 (210) | 18,4 (40.7) | 18,3 (40.5) | 18,2 (40.3) | 18,1 (40.1) |
| 72,0 (240) | | | | |
| 84,0 (280) | | | | |
| 88,0 (290) | | | | |

Luffing Jib Length 72,0 m (236.2 ft)

| Boom m (ft) | 30,0 (98.4) | 42,0 (137.8) | 54,0 (177.2) |
|-------------|--------------|--------------|--------------|
| Radius | | | |
| 21,3 (70) | — | — | |
| 24,0 (80) | — (132.1) | — (115.1) | |
| 28,0 (95) | 58,3 (127.7) | 51,2 (112.4) | 43,1 (94.6) |
| 34,0 (115) | 49,9 (105.8) | 48,2 (103.7) | 40,6 (88.0) |
| 40,0 (135) | 40,0 (84.8) | 39,8 (84.5) | 36,3 (78.1) |
| 48,0 (160) | 30,9 (66.6) | 30,7 (66.3) | 30,3 (65.7) |
| 56,0 (185) | 24,5 (53.5) | 24,4 (53.3) | 24,2 (52.9) |
| 64,0 (210) | 19,8 (43.7) | 19,7 (43.5) | 19,5 (43.2) |
| 72,0 (240) | 16,1 (34.6) | 15,7 (32.5) | 15,2 (31.6) |
| 84,0 (280) | | | |
| 88,0 (290) | | | |

Luffing Jib Length 84,0 m (275.6 ft)

| Boom m (ft) | 30,0 (98.4) | 42,0 (137.8) | 54,0 (177.2) |
|-------------|-------------|--------------|--------------|
| Radius | | | |
| 21,3 (70) | | | |
| 24,0 (80) | | | |
| 28,0 (95) | 42,6 (93.3) | 37,9 (83.3) | — (70.9) |
| 34,0 (115) | 40,7 (89.2) | 36,7 (80.5) | 31,4 (68.9) |
| 40,0 (135) | 38,7 (82.5) | 35,4 (77.7) | 30,0 (65.2) |
| 48,0 (160) | 29,8 (64.2) | 29,6 (63.9) | 26,4 (57.4) |
| 56,0 (185) | 23,4 (51.2) | 23,3 (50.9) | 22,7 (49.8) |
| 64,0 (210) | 18,8 (41.5) | 18,6 (41.2) | 18,5 (40.9) |
| 72,0 (240) | 15,2 (32.5) | 15,1 (32.3) | 14,9 (32.0) |
| 84,0 (280) | 10,6 (21.4) | 9,6 (19.5) | 9,1 (18.4) |
| 88,0 (290) | | 6,8 (14.2) | 6,6 (14.0) |

luffing jib load charts

24

Liftcrane Boom Capacities - Model 16000 Series 3 No. 59 Luffing Jib on No. 58 Heavy Lift Main Boom

150 590 kg (332,000 lb) Counterweight 54 430 kg (120,000 lb) Carbody Counterweight
360° Rating

kg (lb) x 1 000

75° Boom Angle

Luffing Jib Length 24,0 m (78.7 ft)

| Boom m (ft) | 30,0 (98.4) | 42,0 (137.8) | 54,0 (177.2) | 66,0 (216.5) |
|-------------|--------------|--------------|--------------|--------------|
| Radius | | | | |
| 24,0 (80) | 75,6 (163.2) | | | |
| 26,0 (90) | 68,1 (140.3) | 65,0 (133.9) | | |
| 28,0 (95) | 61,9 (130.9) | 59,1 (124.9) | | |
| 32,0 (105) | 52,1 (114.9) | 49,7 (109.7) | 46,9 (103.4) | 43,5 (96.0) |
| 36,0 (120) | | 42,5 (91.8) | 40,2 (213.0) | 37,2 (80.5) |
| 38,0 (125) | | | 37,3 (82.1) | 32,3 (76.3) |
| 42,0 (140) | | | | 30,2 (65.1) |
| 46,0 (155) | | | | |
| 52,0 (175) | | | | |
| 54,0 (180) | | | | |
| 56,0 (185) | | | | |

Luffing Jib Length 36,0 m (118.1 ft)

| Boom m (ft) | 30,0 (98.4) | 42,0 (137.8) | 54,0 (177.2) | 60,0 (196.9) |
|-------------|--------------|--------------|--------------|--------------|
| Radius | | | | |
| 24,0 (80) | | | | |
| 26,0 (90) | | | | |
| 28,0 (95) | 61,1 (128.9) | | | |
| 32,0 (105) | 51,4 (113.3) | 48,7 (107.4) | | |
| 36,0 (120) | 44,0 (95.2) | 41,7 (90.2) | 39,1 (84.4) | — (81.0) |
| 38,0 (125) | 41,0 (90.3) | 38,9 (125.5) | 36,3 (79.9) | 34,9 (76.7) |
| 42,0 (140) | 35,9 (77.5) | 34,0 (85.5) | 31,8 (68.6) | 30,4 (65.8) |
| 46,0 (155) | | 30,0 (63.7) | 28,0 (59.5) | 26,8 (57.1) |
| 52,0 (175) | | | | 22,4 (47.5) |
| 54,0 (180) | | | | |
| 56,0 (185) | | | | |

Luffing Jib Length 48,0 m (157.5 ft)

| Boom m (ft) | 30,0 (98.4) | 42,0 (137.8) | 54,0 (177.2) | 60,0 (196.9) |
|-------------|--------------|--------------|--------------|--------------|
| Radius | | | | |
| 34,0 (110) | 46,4 (104.2) | | | |
| 36,0 (120) | 43,0 (92.9) | — (87.5) | | |
| 38,0 (125) | 40,0 (87.9) | 37,6 (82.8) | | |
| 40,0 (135) | 37,3 (79.3) | 35,1 (74.6) | 32,6 (69.2) | |
| 42,0 (140) | 34,9 (75.5) | 32,9 (71.0) | 30,5 (65.8) | 29,1 (62.8) |
| 44,0 (145) | 32,8 (71.9) | 30,8 (67.6) | 28,5 (62.6) | 27,2 (59.8) |
| 46,0 (155) | 30,8 (65.6) | 29,0 (61.6) | 26,8 (56.9) | 25,6 (54.3) |
| 50,0 (165) | 27,4 (60.0) | 25,7 (56.3) | 23,7 (52.0) | 22,6 (49.6) |
| 56,0 (185) | 23,2 (50.6) | 21,7 (47.5) | 20,0 (43.7) | 19,0 (41.6) |
| 60,0 (200) | | 19,5 (41.8) | 17,9 (38.6) | 17,0 (36.7) |
| 64,0 (215) | | | 16,0 (35.2) | 15,2 (32.2) |

Luffing Jib Length 60,0 m (196.9 ft)

| Boom m (ft) | 30,0 (98.4) | 42,0 (137.8) | 54,0 (177.2) | 60,0 (196.9) |
|-------------|-------------|--------------|--------------|--------------|
| Radius | | | | |
| 40,0 (135) | 36,1 (76.7) | | | |
| 44,0 (145) | 31,6 (69.4) | 29,6 (64.9) | | |
| 48,0 (160) | 27,9 (60.3) | 26,0 (56.2) | 23,9 (51.5) | 22,7 (48.9) |
| 54,0 (180) | 23,5 (50.6) | 21,8 (47.0) | 19,9 (42.9) | 18,8 (40.6) |
| 60,0 (200) | 19,9 (42.9) | 18,4 (39.8) | 16,8 (36.1) | 15,8 (34.0) |
| 66,0 (220) | 17,0 (36.6) | 15,7 (33.8) | 14,2 (30.5) | 13,3 (28.7) |
| 72,0 (240) | | 13,4 (28.6) | 12,0 (25.8) | 11,3 (24.2) |
| 76,0 (250) | | | 10,7 (23.6) | 10,0 (22.1) |
| 80,0 (265) | | | | |
| 84,0 (280) | | | | |
| 88,0 (300) | | | | |

Luffing Jib Length 72,0 m (236.2 ft)

| Boom m (ft) | 30,0 (98.4) | 42,0 (137.8) | 48,0 (157.5) |
|-------------|-------------|--------------|--------------|
| Radius | | | |
| 40,0 (135) | | | |
| 44,0 (145) | | | |
| 48,0 (160) | 26,6 (57.4) | 24,7 (53.1) | |
| 54,0 (180) | 22,2 (47.8) | 20,5 (44.1) | 19,5 (41.9) |
| 60,0 (200) | 18,7 (40.2) | 17,1 (36.9) | 16,3 (35.0) |
| 66,0 (220) | 15,9 (31.4) | 14,5 (31.1) | 13,6 (29.3) |
| 72,0 (240) | 13,5 (28.9) | 12,2 (26.2) | 11,5 (24.7) |
| 76,0 (250) | 12,1 (26.7) | 10,9 (24.1) | 10,3 (22.6) |
| 80,0 (265) | | 9,8 (—) | 9,1 (—) |
| 84,0 (280) | | 8,7 (18,2) | 8,1 (17,1) |
| 88,0 (300) | | | |

Luffing Jib Length 84,0 m (275.6 ft)

| Boom m (ft) | 30,0 (98.4) |
|-------------|-------------|
| Radius | |
| 40,0 (135) | |
| 44,0 (145) | |
| 48,0 (160) | |
| 54,0 (180) | 21,0 (45.1) |
| 60,0 (200) | 17,5 (37.6) |
| 66,0 (220) | 14,7 (31.5) |
| 72,0 (240) | 12,3 (26.4) |
| 76,0 (250) | 11,0 (24.2) |
| 80,0 (265) | 9,8 (—) |
| 84,0 (280) | 8,7 (18.5) |
| 88,0 (300) | 7,7 (15.2) |

model 16000



Luffing jib load charts

25

Liftcrane Boom Capacities - Model 16000 Series 3 No. 59 Luffing Jib on No. 58 Heavy Lift Main Boom

150 590 kg (332,000 lb) Counterweight 54 430 kg (120,000 lb) Carbody Counterweight
360° Rating

kg (lb) x 1 000

65° Boom Angle

| | Luffing Jib Length 24,0 m (78.7 ft) | | | | | Luffing Jib Length 36,0 m (118.1 ft) | | | | | Luffing Jib Length 48,0 m (157.5 ft) | | | | |
|---------------|-------------------------------------|----------------|-----------------|-----------------|--|--------------------------------------|----------------|----------------|-----------------|----------------|--------------------------------------|-----------------|----------------|----------------|-----------------|
| | Boom m (ft) | 30,0 (98.4) | 42,0 (137.8) | 54,0 (177.2) | | 66,0 (216.5) | Boom m (ft) | 30,0 (98.4) | 42,0 (137.8) | | 54,0 (177.2) | 60,0 (196.9) | Boom m (ft) | 30,0 (98.4) | 42,0 (137.8) |
| Radius | | | | | | | | | | | | | | | |
| 32,0 (105) | 47,9 (105.7) | | | | | 32,0 (105) | | | | | 32,0 (105) | | | | |
| 36,0 (120) | 41,0 (88.7) | — (80.8) | | | | 36,0 (120) | | | | | 36,0 (120) | | | | |
| 40,0 (135) | 61,9 — | 32,4 (68.9) | | | | 40,0 (135) | 34,8 (74.0) | | | | 40,0 (135) | | | | |
| 44,0 (145) | | 28,2 (61.9) | | 25,0 (60.6) | | 44,0 (145) | 30,6 (67.1) | 27,4 (60.1) | | | 44,0 (145) | | | | |
| 48,0 (160) | | | 21,9 (47.2) | 18,5 (39.8) | | 48,0 (160) | 27,0 (58.4) | 24,2 (52.2) | — (44.9) | | 48,0 (160) | 26,0 (56.1) | | | |
| 52,0 (175) | | | | 16,2 (34.3) | | 52,0 (175) | | 21,5 (45.7) | 18,4 (39.2) | 16,6 (35.4) | 52,0 (175) | 23,1 (49.2) | 20,3 (43.1) | | |
| 56,0 (185) | | | | | | 54,0 (180) | | 20,3 (43.7) | 17,4 (34.3) | 15,7 (33.8) | 54,0 (180) | 21,9 (47.1) | 19,1 (41.2) | | |
| 60,0 (200) | | | | | | 60,0 (200) | | | 14,6 (31.2) | 13,1 (28.2) | 60,0 (200) | 18,5 (39.9) | 16,2 (34.8) | 13,3 (28.7) | |
| 62,0 (205) | | | | | | 62,0 (205) | | | | 12,3 (26.9) | 62,0 (205) | 17,5 (38.2) | 15,3 (33.3) | 12,6 (27.5) | |
| 68,0 (225) | | | | | | 68,0 (225) | | | | | 68,0 (225) | | | 10,6 (23.0) | |
| 72,0 (240) | | | | | | 72,0 (240) | | | | | 72,0 (240) | | | 9,3 (19.8) | |

| | Luffing Jib Length 60,0 m (196.9 ft) | | |
|---------------|--------------------------------------|----------------|-----------------|
| | Boom m (ft) | 30,0 (98.4) | 42,0 (137.8) |
| Radius | | | |
| 54,0 (180) | 20,6 (44.5) | | |
| 56,0 (185) | 19,5 (42.6) | | |
| 58,0 (190) | 18,4 (40.8) | 15,7 (34.9) | |
| 60,0 (200) | 17,4 (37.5) | 14,8 (31.9) | |
| 64,0 (210) | 15,6 (34.5) | 13,2 (29.3) | |
| 68,0 (225) | 14,0 (30.5) | 11,8 (25.7) | |
| 72,0 (240) | 12,6 (26.9) | 10,5 (22.5) | |
| 74,0 (245) | 11,8 (25.7) | 9,9 (21.5) | |
| 76,0 (250) | | 9,3 (20.6) | |
| 80,0 (260) | | — (18.7) | |
| 84,0 (280) | | | |

| | Luffing Jib Length 72,0 m (236.2 ft) | |
|---------------|--------------------------------------|----------------|
| | Boom m (ft) | 30,0 (98.4) |
| Radius | | |
| 54,0 (180) | | |
| 56,0 (185) | | |
| 58,0 (190) | | |
| 60,0 (200) | 16,1 (34.5) | |
| 64,0 (210) | 14,3 (31.6) | |
| 68,0 (225) | 12,7 (27.7) | |
| 72,0 (240) | 11,3 (24.3) | |
| 74,0 (245) | 10,7 (23.2) | |
| 76,0 (250) | 10,1 (22.2) | |
| 80,0 (260) | 9,0 (20.3) | |
| 84,0 (280) | 7,9 (16.8) | |

model 16000





Americas Region

Manitowoc

Telephone Number: + 1 920 684 6621
Fax Number: + 1 920 683 6278
Address: 2401 S. 30th Street,
Manitowoc, WI 54220 USA

Grove, National, Manlift, Potain

Telephone Number: + 1 717 597 8121
Fax Number: + 1 717 593 5929
Address: 1565 Buchanan Trail East,
Shady Grove, PA 17256 USA

Manitowoc Crane Group - Brazil

Telephone Number: +55 11 3841 2741
Fax Number: +55 11 3841 2740
Address: Edificio: Itaim Office Tower
Rua Gomes de Carvalho,
1581 - 2 andar cj 205 / 206
Vila Olimpia - SP - Cep: 04547 - 006 Brasil

Grove - Mexico

Fax Number: +5281 8124 - 0128
Fax Number: +5281 8124 - 0129
Address: Miravalle Center, piso PB, Suite 106
Calz San Pedro 250 Nte. Monterrey,
Nuevo Leon Mexico

EMEA Region

Grove RT

Telephone number: + 44 191 565 6281
Fax number: + 44 191 515 7475
Address: Akeler House, 1 Emperor Way
Doxford International Business park
Sunderland, England SR3 3XR

Grove GMK

Telephone Number: + 49 4421 294 454
Fax number: + 49 4421 294 244
Address: Industriegelände West
26389 Wilhelmshaven
Postfach 1853, Germany

Potain & Manitowoc

Telephone number: + 33 472 182 164
Fax number: + 33 472 182 109
Address: 18 Chemin de Charbonnières
69130 Ecully, France

Manlift - France

Telephone Number: +33 (0) 553 84 85 86
Fax number: +33 (0) 553 84 85 74
Address: Delta Manlift ZI de Fauillet BP 20
F-47400 Tonneins, France

Manlift - Germany

Telephone Number: + 49 (0) 7253 9401 13
Fax number: + 49 (0) 7253 9401 16
Address: Liftlux Potain GmbH
Service und Ersatzteilzentrum
Heidigstrasse 17 D-76709 Kronau, Germany

Asia/Pacific Region

China, Peoples Republic of

Manitowoc Crane Group Asia PTE LTD

Telephone Number: + 65 6264 1188
Fax Number: + 65 6862 4040 (Sales/Admin)
+ 65 6862 4142 (Parts/Service)
+65 6264 7596 (Service)

Address: 4 Kwong Min Road
Singapore, 628707 P R China

Zhangjiagang

Telephone Number: + 86 512 56915000
Fax number: + 86 512 58780098
Address: No. 55 Zhen Bei (East)Road
South District Zhangjiagang Economic Develop-
ment Zone
Jiangsu Province 215618 P R China

Manitowoc Crane Group Asia Shanghai Office

Telephone number: + 86 21 6270 0442
Fax number: + 86 21 6270 1436
Address: RM. D-305 Shanghai-
Mira Commercial Centre
No.2633, West Yanan Rd
Shanghai, 200336 PR China

Manitowoc Crane Group Asia Shanghai

Operations Office

Telephone Number: + 86 21 5111 3579
Fax number: + 86 21 5111 3578
Address: Rm1201, #933 Zhongshanxilu
Hongqiao Silver Tower
Shanghai 200051, P R China

Australia

Manitowoc Crane Group Australia

Manitowoc Crane Group - Melbourne Office
Telephone Number: + 61 03 9336 1300
1300 788 089
Fax number: + 61 03 9336 1322
Address: 2/22 Disney Avenue, East Keilor
VIC 3033 Australia

Manitowoc Crane Group - Sydney Office

Telephone Number: +61 02 9896 4433
1300 788 089
Fax number: +61 02 9896 3122
Address: 142 Magowar Road
Girraween NSW 2145 Australia

Korea

Manitowoc Crane Group Korea CO LTD

Telephone Number: + 82 2 508 3361
Fax number: 1300 788 089 (Parts)
+ 82 2 508 3365

Address: Room 301 Gugu Building 145-18

Samsung-Dong, Kangnam-Ku
Seoul 135-878 Korea

Philippines

Manitowoc Crane Group

Telephone Number: + 632 844 9437
Fax number: + 632 844 4712
Address: Southwest Centre Building
Corner Makiling Street
Southwest Superhighway,
Palanan, Makati 1235 Phillipines



www.manitowoccranecare.com